

## SAH NOTICES

**1983 Annual Meeting—Phoenix, Arizona (April 6-10).** Carol H. Krinsky, New York University, will be general chairman of the meeting. Bernard Michael Boyle, Arizona State University, and Robert C. Giebner, University of Arizona-Tucson, will be local chairmen. Headquarters for the meeting will be the Phoenix Hilton Hotel in Phoenix.

A list of all SAH sessions appeared in the April 1982 *Newsletter*, with the names and addresses of the persons who will chair them. (Would anyone who has submitted papers to Pierre duPrey at the Queen's University, kindly resubmit proposed paper topics to his present address as Director, Study Programmes, Canadian Centre for Architecture, 2nd Floor, 1440 St. Catherine St., West, Montreal, Quebec, Canada H3G 1R8.)

There will be half-day and full-day excursions to sites of architectural and urbanistic interest in the Phoenix-Tucson region. The tour program in Phoenix will feature the work of Frank Lloyd Wright, Paolo Soleri and Arcosanti. The tours to and around Tucson will include the architecture of several cultures and periods from the pre-colonial to modern times. Exhibitions are being scheduled in local museums to coordinate with our meeting. After the annual meeting program ends on Sunday, April 10, we will offer a special three-day optional tour in coordination with the Southwest Mission Research Center; this will go to the otherwise hard-to-visit missions of the Southwestern United States and Sonora, Mexico.

Full information will be contained in the Preliminary Program for the meeting, which will reach the membership early in January. **Members abroad who wish to have the Preliminary Program sent airmail should notify the SAH office well in advance of this time.**

**1984 Annual Meeting—Minneapolis, Minnesota (April 25-29).** The general chairman of the meeting will be Carol H. Krinsky, of New York University. Local co-chairmen will be Eileen Michels, College of St. Thomas and Tom Martinson of Ellerbe and Associates, Inc.

**1982 Domestic Tour—Natchez, Mississippi (October 27-31).** Ronald W. Miller, Historic Natchez Foundation, and Samuel Wilson, Jr., Koch and Wilson, Architects, will be chairmen of the tour.

**1983 Domestic Tour—Buffalo and Rochester, New York (August 24-28, 1983).** Francis R. Kowsky, State University College at Buffalo, and Jean France of Pittsford, New York, will be chairmen of the tour. Announcements will reach the membership in March.

To enable outstanding students to participate in this tour, the Society will hold a competition for **student scholarships**. A surcharge on non-student participants' registra-

tions will be applied toward such tour scholarships, which will defray wholly or in large part the cost of the tour itself, hotel accommodations and air or train fare.

To be eligible, a student must be engaged in graduate work in architecture or architectural history, city planning or urban history, landscape or the history of landscape design. Qualified students—who must be SAH members—should write the SAH office (1700 Walnut Street, Suite 716, Philadelphia, PA 19103) for an application. Completed applications, with required *vitae* and a minimum of two departmental recommendations, should be returned to the SAH office by March 1, 1983.

**1983 Foreign Tour—Finland (Departure, July 23—probable return August 14).** The tour will be led by Paul David Pearson, School of Architecture, City University of New York. Further information will appear in subsequent *Newsletters*.

**SAH Reception.** A reception for SAH members will be held at the Union League in Philadelphia, February 18, 1983. The Philadelphia Chapter of SAH will help to host the reception. Complete information will appear in the December *Newsletter*, and SAH and the Philadelphia Chapter hope you will have a chance to join us.

**SAH Student Scholarship Winner.** The all-expense student scholarship for the 1982 annual tour, *The Architecture of Natchez*, has been awarded to Catherine G. Hoffman, graduate student in the Art History Department at the University of Delaware.

**SAH Placement Service Bulletin, No. 3, October 1982** is enclosed with this issue of the *Newsletter*. The next *Bulletin* will appear with the February 1983 issue. **Deadline:** January 10, 1983.

## ROSANN BERRY ANNUAL MEETING FELLOWSHIP

The Rosann Berry Memorial Fund is to be used to help an advanced graduate student attend the SAH Annual Meeting. A Revolving Fund has been set up and the income from this Fund will be used to provide substantial assistance on the cost of transportation, lodging, and attendance at meeting events and tours. Rosann's warm interest in people will be fittingly commemorated by this award, which will be called the Rosann Berry Annual Meeting Fellowship. Those who wish to help increase the award may do so by sending their tax-free contribution to the Rosann Berry Memorial Fund, c/o SAH headquarters.

The student will be selected each year on a competitive basis. Mechanics of the competition will be announced in the December *Newsletter*.



*Barbara Wriston reads greetings from SAH President Damie Stillman at the opening dinner for the Robert Smith celebration, University of Edinburgh, July 29. The affair was held in the upper library hall, built by architect William Henry Playfair (1789-1857). Dr. J. Mordaunt Crook of the University of London was the principal speaker.*

#### SCHOOLS AND CONFERENCES

The Department of Architecture, M.I.T., announces a conference on the topic, "Dutch Architecture Between the Wars," to take place Nov. 5-6. For information, contact Stanford Anderson (SAH), M.I.T., 3-305, 617/253-1351.

An autumn conference series, **Rehab '82: New Economic Opportunities**, on rehabilitation and adaptive use of older commercial buildings, will concentrate on demonstrating how rehab projects can be certified to qualify for up to a 25% tax credit under the Economic Recovery Act of 1981. Co-sponsored by the Texas Historical Commission and the Texas Society of Architects, the conferences will be held Nov. 9 in Amarillo, Nov. 10 in Dallas, Nov. 11 in San Antonio, and Nov. 12 in Houston. Contact the THC, Box 12276, Austin, TX 78711 (512/475-3094).

The **Center for the Study of American Architecture** is being formed with the aid of an NEA grant and will be established at Columbia University. It is expected to become the primary component of a national network of regional study centers to be established within existing academic institutions in the major regions of the U.S. in order to heighten interest in and respect for local architectural traditions, establish the value of specialized studies in local and regional architecture, and provide local collection points for

the architectural records of the region. Information about these records will be promulgated through the newly established National Catalog of American Architectural Records serviced by the Library of Congress. For further information contact the Graduate School of Architecture and Planning, Columbia U., Avery Hall, NY, NY 10027 (212/280-3473). To inaugurate the Center, the School will host a **major symposium**, April 21-24, 1983 on **American Architecture: In Search of Traditions**. Co-directing the symposium are Columbia professors David DeLong and Robert A. M. Stern, and Smith College professor Helen Searing.

The Society for the Preservation of New England Antiquities is sponsoring a slide/lecture series designed by its preservation staff to **give homeowners access to the technical information needed to restore their own old houses**. They will be given on four consecutive Saturday mornings, 10:00-noon, beginning on October 16 at the Museum of Our National Heritage, 33 Marrett Road, Lexington, MA 02173 (617/861-6560).

The 12th annual conference of the Maryland Historical Trust, to be held in Annapolis, Nov. 5-7, 1982, will present a variety of successful and innovative **historic preservation activities and projects along the East Coast, as well as in Maryland**. These include projects in North Carolina, Georgia and Virginia. Contact MHT, 21 State Circle, Annapolis, MD 21401 (301/269-2212).

The 1983 meeting of the **Society for the Study of Architecture in Canada** will be held in Newfoundland, July 27-30, and will see a change in format. Starting in St. John's with a number of paper sessions, the following day the meeting will tour Conception Bay and cross into Trinity Bay. That evening's session will be held in Clarendville. The following day will involve a tour of Trinity, Bonavista and nearby towns, returning to St. John's that evening. On Saturday there will be further sessions in St. John's with an afternoon tour of the city. Session topics include: Maritime Architecture; Contemporary Architecture in Canada; Greed and the Built Form; Canadian Building Technology; Atlantic Region Architecture; Housescape—Streetscape—Townscape; and a general session. For further information, contact: Shane O'Dea/Gerald L. Pocius, English Dept., Memorial University of Newfoundland, St. John's, Newfoundland A1B 3X9.

#### FELLOWSHIPS AND GRANTS

The American Studies Association and Greenwood Press join in announcing the **Ralph Henry Gabriel Prize in American Studies** to be awarded in 1983 to the author of the book-length original manuscript judged best by a special prize committee of the ASA. For rules and particulars, apply to the Executive Director, ASA, 307 College Hall/CO, University of Pennsylvania, Philadelphia, PA 19104. Deadline for application is December 31, 1982.

October 1982

VOL. XXVI NO. 5

The *Newsletter* is published every even month by the Society of Architectural Historians, 1700 Walnut Street, Suite 716, Philadelphia, PA 19103. Deadline for submission of material: the 15th of the preceding even month.

President: Damie Stillman  
Dept. of Art History, Univ. of Delaware,  
Newark, DE 19711

Editor: Geraldine E. Fowle  
Department of Art and Art History,  
UMKC, Kansas City, MO 64110

Assistant Editor: Thomas M. Ridington  
Department of Art History, LaSalle Col-  
lege, Philadelphia, PA 19141

Publications Editor: Judith Holliday  
Fine Arts Library, Sibley Dome, Cornell  
University, Ithaca, NY 14853

### In Memoriam

The Society is saddened by the tragic and untimely death of

Ann Van Zanten  
in Paris on August 9, 1982. The Society extends its deepest sympathy to her husband, David, and her family.

### CHAPTERS

**American Garden History Society.** The Chapter will have a meeting at Wave Hill in New York on the day of their second annual garden history conference, Oct. 23. Speakers, planned by Leslie Close, are: Ann Leighton (17th Cent. American Gardens), Keith Morgan (Emergence of the American Formal Garden Revival), Deborah Nevins (Arts and Crafts Garden), James Buckler (The Horticultural Extravaganza of the Victorian Era), and Catherine Howett whose topic is not listed.

**Southern California.** New officers are:

Virginia Kazor (Pres.)  
Pauline Stein (Vice Pres.)  
Stan Penton (Treas.)  
Michael Dougherty (Sec.)

**Western Reserve.** Ronald Rasmussen, AIA, will lead members at the Oct. 2nd meeting on a tour of five important downtown Akron sites: Akron Civic Theatre (a restored "atmospheric" movie palace), Art Museum (adaptive use of a monumental post office), Quaker Hilton Inn (adaptive renovation of grain silos for hotel use), Ohio Canal, and Hower House (a restored 1871 Second Empire villa). High tea will close the tour in the Hower House. The meeting of Nov. 14 will feature a tour of the grounds and the former Bird Library of Kenyon V. Painter: Beaumont School. Speakers are James Gibans, AIA, and Kenneth Goldberg on the topic: A School the Children Helped Plan: Ruffing Montessori School.

**Northern Pacific.** New officers are:

Earl Layman (Pres.)  
Karen Weitze (Vice Pres.)  
Rob Anglin (Sec.-Treas.)  
John Snyder (Preservation Officer)

**Chicago.** Dean Eckert, who led the SAH foreign tour to Japan last year, opened the first meeting of the new season with an illustrated talk, "Japanese Gardens and Their Architecture in Perspective." This anticipates the opening of the new Japanese Gardens at the Botanic Garden in September.

### MUSEUMS AND EXHIBITIONS

The J. Paul Getty Museum is offering a docent outreach program to all community groups interested in learning about the museum. This service is intended to acquaint adult groups in the community with the museum, whether they are potential museum visitors or people who may not have an opportunity to visit the museum itself. There is no charge for this service, however a mileage fee may be requested for long distances. For information, call or write the museum, Education Department, Box 2112, Santa Monica, CA 90406, 213/459-2306, ext. 274.

**Fragments of Invention: the Sketchbooks of Le Corbusier,** exploring the functions of Le Corbusier's sketchbooks in his creative process as architect, urbanist, painter, and sculptor, is on display at the National Academy of Design (1083 Fifth Ave., NY) through the end of October, and will include 21 original sketchbooks, 110 photographs, and other original works in collage, lithograph, sculpture and painting. All 73 sketchbooks are being published in four volumes by the Architectural History Foundation and the MIT Press.

**Buildings on Paper** moves to the Octagon in Washington, Oct. 20-Jan. 3, 1983 (see *JSAH*, April 1982, p. 3).

The Farish Gallery of the School of Architecture, Rice University, Houston, has organized an exhibition, **H. H. Richardson: Residential Projects, 1879-1886.** Covering seventeen projects and including more than 150 original drawings, the exhibit will be shown Oct. 27-Nov. 28, 1982.

**Speaking a New Classicism: American Architecture Now,** the National Building Museum's initial traveling exhibition, featuring 137 items by 24 architects, is at Rice University until Oct. 24, and will then move to Tulane University, New Orleans, Nov. 15-Dec. 15. Contact: Jan DuPlain, NBM, Pension Building, 440 G St., NW, Washington, DC 20001 (202/783-0690).

**VITAL SIGNS—CONNECTICUT, Communities Working for the Future through Preservation,** organized by the Conn. Trust for Historic Preservation, is designed to help the state's citizens understand the evolution of their communities by examining the various historical forces which have left their stamp on the state's landscape and identifying those architectural and natural elements that contribute to a community's unique character. Focusing on five environments, the exhibit is on view in Hartford's Old State House until Oct. 24, 1982, after which it will travel for two years to museums, libraries and historical societies throughout the state. Contact: Caroline P. Adams, CTHP, 152 Temple Street, New Haven, CT 06510 (203/562-6312).

How Santa Barbara created one of the most unified urban/suburban environments in America is the subject of an important exhibition, **Santa Barbara: The Creation of a New Spain in America,** to be shown at UC-SB's Art Museum, Nov. 3-Dec. 12, 1982. Organized by former SAH President David Gebhard, to mark SB's Bicentennial, the exhibit will include original drawings, models and photographs. Many of the drawings, which include both architectural and landscape architecture studies, will be seen publicly for the first time. An illustrated catalog will accompany the exhibit.

A traveling exhibition examining the **interaction between local traditions and the production of architecture in six regions of America** is being planned to open at the time of Columbia U's symposium on American Architecture: In Search of Tradition, April 21, 1983. Each region's architecture will be examined in a separate section, illustrating vernacular architecture as well as historically significant buildings. In addition, each division will include as a sub-section the architecture of a principal city in the region. Although the six sections will open simultaneously in New York, they will be designed to allow each to travel independently. Contact the Administrative Coordinator, Ann Kaufman, Graduate School of Architecture and Planning, Columbia U., Avery Hall, NY, NY 10027.

## COMPUTER DATA BASE NOW AVAILABLE TO MEMBERS

A bibliographic data base referencing the complete run of the *Journal of the Society of Architectural Historians* is now on-line with Bibliographic Retrieval Services (BRS) of Latham, NY and is available to SAH members or other individuals through the offices of the Society or through any library which has access to the BRS system.

This data base, called 'JSAH,' is just one of many on-line data bases managed by BRS. Others include SSCI (Social Science Citation Index), NYTS (New York Times Information Bank) and SMIE (Smithsonian Science Information Exchange).

Through the JSAH data base researchers can electronically scan through all articles, book reviews and other documents published in the *Journal* for any material relevant to their field of study.

The data base can be searched in a number of ways: 1) through the Society's office in Philadelphia, 2) through any library which uses BRS, or 3) directly through a terminal or personal computer with communications capabilities. Searches made through SAH headquarters will be billed at the rate of 50¢ per connect-minute. Since most searches take only a few minutes the cost should not exceed a few dollars. A similar arrangement exists at libraries with BRS service although the charges may vary. SAH members interested in accessing the BRS data base directly should contact the Society for an account and further information.

Special thanks goes to the Graham Foundation for Advanced Studies in the Fine Arts, Chicago, which provided the major funding for this project.

## OF NOTE

A new publication, *American Architecture*, will be the journal of the newly formed Center for the Study of American Architecture at Columbia University. Planned to document the ongoing scholarly concerns of the Center and to record important events as they occur, the journal's inaugural issue will feature the nine papers to be delivered at the **American Architecture: In Search of Traditions** symposium at Columbia U. next April. (See related items under **Schools and Conferences**, and **Museums and Exhibitions**.)

## TOURS

The Boston Architectural Center is sponsoring a 13-day **architectural tour to Mexico** in January, 1983. Including Mexico City, Coyoacan, Pearegal, San Angel, Teotihuacan, San Miguel de Allende, Guanajuato, Morelia, Merida, Uxmal and Chichen-Itza, the tour will cost about \$850 (excluding meals). Contact: Leon Bailey, BAC Tours Committee, 320 Newbury Street, Boston, MA 02115.

**The Legacy of Southern California**, a six-day preservation study tour sponsored by the National Trust, November 4-9, 1982, will feature the architecture of Los Angeles, Pasadena, and Santa Barbara. For further information, contact Bryan DeLeo, Manager, Special Programs, NTHP, 1785 Massachusetts Ave., NW, Washington, DC 20036 (202/673-4138).

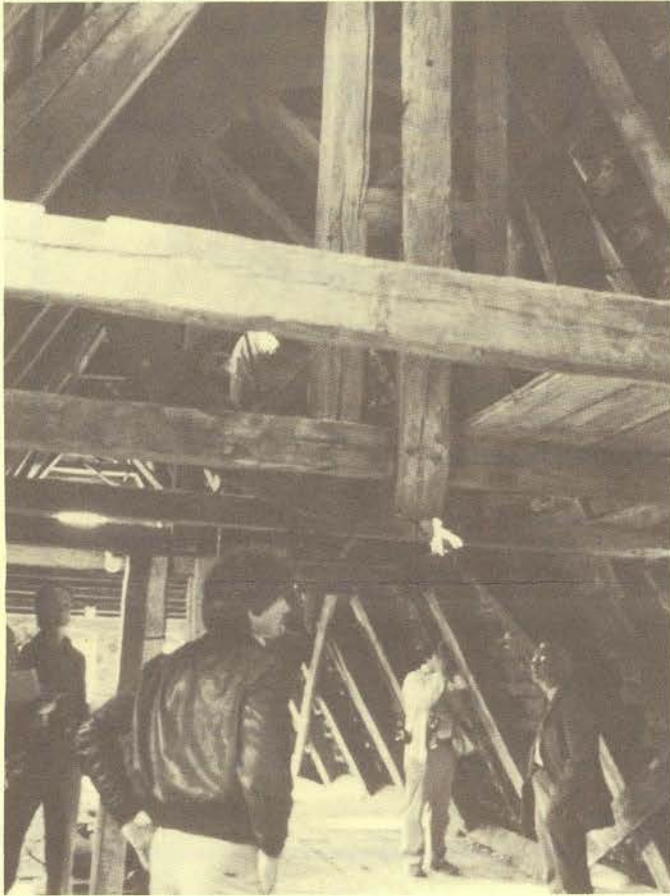
## CALL FOR PAPERS

The 9th Biennial **American Studies Association Convention** for November 3-6, 1983, in Philadelphia, is accepting proposals for papers, sessions, workshops, panels, or other professional contributions to the program. All constituent areas of American Studies are welcome, especially those relating to theoretical foundations and public practice of American Studies. Contact the ASA office, 307 College Hall/CO, University of Pennsylvania, Philadelphia, PA 19104.

The Center for Small Town Research and Design at the School of Architecture, Mississippi State U. wishes to invite papers for the **4th Annual Chautauqua in Mississippi: The History of the Small Town**, to be held October 12-14, 1983 on the MSU campus. The objective is to bring together both ideas and images which describe the physical evolution of the small town as well as the attitudes which have produced its form. Two-page abstracts or typed manuscripts are due April 1, 1983. Contact: Michael W. Fazio, School of Architecture, P.O. Drawer AQ, MSU, Miss. State, MS 39762.

## THE NORTH GERMAN TOUR

All SAH tours turn out to be much richer experiences than perusal of their itineraries would lead one to imagine; and, as recent letters show, the forthcoming Finnish trip has already created considerable excitement. To encourage this interest, we shall say a few words about the North German tour which has just ended successfully. We participants experienced much beyond what had been anticipated from the published schedule. On these tours, we have come to expect the association with scholars of the first rank and encounters with the latest thinking in the many areas we investigate, nor were we disappointed here. And it was such things as the quality of the leadership, the devotion to the subjects under scrutiny, the awesome range of topics, plus the constant surprises—such as getting to explore the expressionistic farm at Gleschendorf (H. Häring, 1924-25) or having any number of people offering to help us—that made this tour special. It seemed we had only to stand near a building and people would offer to take us through. Many special openings (including evening openings of museums, complete with director and staff for personalized viewing) had been prearranged, but good fortune allowed unplanned tours as well. Many times these were the result of hard work and asking around by our leaders—99% of the time with wonderful results. Thus also participants with special interests such as seeing a 15th century windlass in the storage attic of a merchant's house, a synagog or a protestant church, or a Bach organ could be instantly gratified. Of all these experiences, the greatest were the human ones. It is not possible to list the many people who touched us with their warmth and their open giving including those who opened their homes to our inspection. None of us who took this trip will forget the wonderful personalities of the women who led our group through the three nunneries we visited. The one, a retired medical doctor, jumped in when the regular English-speaking guide could not be found and dazzled us with her discourse. These encounters, some chance, some planned, personalized and enriched the tour. We fully expect the Finnish journey to equal it.



Lübeck, the Attic Windlass



Marburg—SAH Learns How to Climb



SAH Moves in Schloss at Marburg



Waiting for the Bus in Front of the Haus Salve Hospice, Braunschweig (1805, by P. J. Krahe)

Photos: Tom Ridington

## RECORDS

A *Biographical Dictionary of Architects in Canada* is being prepared, and its editor is particularly anxious to get in touch with anyone who might be able to contribute information about architects and their work. Contact: Robert G. Hill, Editor, *BDAC*, Box 1066, Station A, 17 Front Street West, Toronto, Ontario M5W 1G6 (416/466-2218). Tentative publication date: 1983 or 1984.

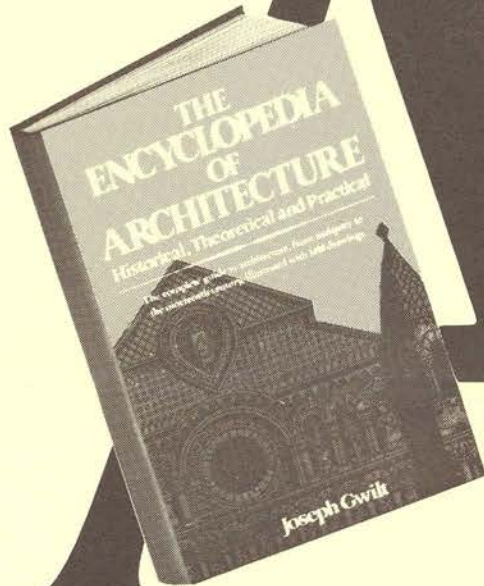
The Hispanic Division of the Library of Congress, with the joint support of the Tinker Foundation and the Organization of American States, has begun compilation of a **new, completely revised and updated third edition** of the *National Directory of Latin Americanists*. As with the previous directories, the new edition will provide basic biographical and bibliographical data and will detail work experience, research interests, and current addresses. At present the staff is still acquiring names and addresses of individuals who should be considered for inclusion. Scholars in this field who have not yet been contacted should write for a copy of the current *Directory*: Library of Congress, Hispanic Division, National Directory Project, Washington, DC 20540.

# THE ENCYCLOPEDIA OF ARCHITECTURE

Historical, Theoretical and Practical

By **JOSEPH GWILT**

Foreword by Michael Mostoller



The first comprehensive architectural encyclopedia in English — first published in 1842! — now updated with 1,400 antique engravings.

This monumental, 1,392-page volume is divided into four sections. *Book I: History of Architecture* covers the origin of architecture, the architecture of ancient cultures and foreign countries, and British archi-

ture throughout the reign of George III. *Book II: Theory of Architecture* includes construction, building materials, and mediums of expression. *Book III: Practice of Architecture* deals with Grecian and Italian architecture, principles of proportion, medieval architecture, and public and private buildings. *Book IV* is the appendix.

Paperbound, only \$15.95; now at your bookstore, or send check or money order to Crown Publishers, One Park Ave., N.Y., N.Y. 10016. Please add \$1.40 postage and handling charge. N.Y. and N.J. residents, add sales tax.

**CROWN**

Advertisement

available from The American Academy in Rome:

## ***THE RENAISSANCE CARDINAL'S IDEAL PALACE: A CHAPTER FROM CORTESI'S DE CARDINALATU***

edited by KATHLEEN WEIL-GARRIS & JOHN F. D'AMICO

Separatum from Henry A. Millon, editor, *Studies in Art History*, Rome, 1980.  
78 pages, plus indexes and 15 illustrations



A number of volumes of the *Memoirs* and *Papers and Monographs*, published by the American Academy over the past 30 years, are still available. For a complete list, please check the appropriate box below.

Please send \_\_\_\_\_ copies of *The Renaissance Cardinal's Ideal Palace*, at \$12.00 each, plus \$1.00 postage per volume.

\_\_\_\_\_ name  
\_\_\_\_\_ address  
\_\_\_\_\_ zip

Please send a list of available *Memoirs* and *Papers and Monographs*

Send to:

**AMERICAN ACADEMY IN ROME** 41 East 65th Street • New York, New York 10021

Advertisement

## CATALOGUES

- The architecture of Russell Warren in the coastal towns of southeastern New England ; 22 February to March 11, 1982. North Dartmouth, MA.: Gallery, Southeastern Massachusetts Univ., 1982. 15 p. \$5.95. Order from: Publisher, North Dartmouth, MA. 02747
- Berke, Deborah and Kenneth Frampton. Rob Krier : urban projects 1968-1982. New York : Institute for Architecture and Urban Studies ; Rizzoli, 1982. 118 p. (Catalogue/Institute for Architecture and Urban Studies ; 5) \$18.50. ISBN 0-8478-0409-7
- Buildings on paper : Rhode Island architectural drawings, 1825-1945. Providence : Museum of Art, Rhode Island School of Design, 1982. 245 p. \$18.00. Order from: Publisher, 224 Benefit St., Providence, RI. 02903
- Cerri, Maria G. et al, eds. Alfredo d'Andrade : tutela e restauro ; Torino, Palazzo Reale, Palazzo Madama, 27 giugno-27 settembre 1981. Florence : Vallecchi, 1981. 493 p.
- Cislaghi, Giovanni, et al., eds. Giuseppe De Finetti : progetti, 1920-1951 ; XVI Triennale di Milano, Catasto del Disegno. Milan : Clup, 1981. 151 p. L18000. ISBN 88-7005-459-4
- City dwellings and country houses : Robert Adam and his style ; exhibition, Jan. 19-April 11, 1982. New York : Cooper-Hewitt Museum, 1982. 29 p. \$7.45
- Coe, Peter and Malcolm Reading. Lubetkin and Tecton : architecture and social commitment, a critical study. London : Arts Council of Great Britain ; Bristol : Univ. of Bristol, 1981. 202 p.
- Des architectures de terres ou l'avenir d'une tradition millénaire. Paris : Centre Georges Pompidou, 1981. 192 p. F70. ISBN 2-85850-109-2
- Draper, Joan E. Edward H. Bennett : architect and city planner 1874-1954. Chicago : Art Institute, 1982. 63 p. \$10.95. ISBN 0-86559-048-6
- Un episodio del Seicento fiorentino : l'architetto Matteo Nigetto e la cappella Colloreda, documenti e disegni ; Firenze, Palazzo Medici Riccardi, 5 dicembre 1981-5 febbraio 1982. Florence : Centro Di, 1981. 63 p. (Cataloghi ; 148) ISBN 88-7038-040-8
- La escuela ita : 5 años de enseñanza alternativa de arquitectura en la Argentina 1976/1981. Buenos Aires : Espacio Editora, 1981. 179 p. (Cursos de arquitectura 1976/1981)
- Fagiolo, Marcello, ed. La Roma dei Longhi : Papi e architetti tra manierismo e barocco ; Roma, Accademia di S. Luca 15 febbraio-20 marzo 1982. Rome : De Luca, 1982. 95 p. L10000
- Fitch, James M., ed. Shelter : models of native ingenuity ; a collection of essays published in conjunction with an exhibition at the Katonah Gallery, March 13-May 23, 1982. Katonah, NY.: Katonah Gallery, 1982. 56 p.
- Internationale Bauausstellung Berlin 1984 : die Neubaugebiete, Dokumente, Projekte, Erste Projekte ; Katalog einer Ausstellung 1981. Berlin : Quadriga Verlag, 1981. 320 p. DM48. ISBN 3-88679-100-9
- Izzo, Alberto and Camillo Gubitosi, eds. Marcel Breuer : architettura, 1921-1980. Florence : Centro Di, 1981. 173 p. (Cataloghi ; 144)
- Kappe, Shelly, ed. Modern architecture, Mexico. Santa Monica, CA.: SCI-ARC Press, 1981. 44 p. \$15.50. Order from: Publisher, 1800 Berkeley St., Santa Monica, CA. 90404
- Léri, Jean M. Les berges de la Seine : politique d'urbanisme de la ville de Paris, 1769-1848. Paris : Bibliothèque Historique de la Ville de Paris, 1981. 61 p. F20
- Michael Graves : progetti 1977-1981 ; Galleria Nazionale d'Arte Moderna, Roma, Valle Giulia, ottobre-novembre 1981. Rome : De Luca, 1981. 47 p. (Quaderni di architettura ; 1) L8000
- OMA, projects 1978-81 ; published to coincide with the exhibition of OMA drawings at the Architectural Association, London 2 June to 27 June 1981 ; with essays by Robert Maxwell, Rem Koolhaas, Elia Zenghelis. London : Architectural Association, 1981. 48 p. £15.00
- Raimund Abraham : Collisions ; exhibition October 26-December 4, 1981. New Haven : Art and Architecture Gallery, Yale School of Architecture, 1981. 24 p. \$3.00
- Sobieszek, Robert A. Hedrich-Blessing : architectural photography, 1930-1981. Rochester, NY.: International Museum of Photography at George Eastman House, 1981. 24 p. \$10.75
- Stern, Robert A.M. and Thomas P. Catalano. Raymond Hood. New York : Institute for Architecture and Urban Studies ; Rizzoli, 1982. 126 p. (Catalogue/Institute for Architecture and Urban Studies ; 15) \$18.50. ISBN 0-8478-0410-0
- Vauban et ses successeurs en Franche-Comté : trois siècles d'architecture militaire ; exposition itinérante, 1980-81. Besançon : Centre Régional de Documentation Pédagogique, 1981. 248 p.
- Viollet-le-Duc e il restauro degli edifici in Francia ; Mole Antonelliana luglio-ottobre 1981. Milan : Electa, 1981. 117 p. L18000
- Walter Burley Griffin, Marion Mahony Griffin : architectural drawings in the Burnham Library of Architecture ; Sept. 10, 1981-Jan. 31, 1982. Chicago : Art Institute, 1981. 16 p. \$4.75. ISBN 0-86559-047-8

## BOOKS

- Antonio Fernández Alba, arquitecto 1957-1980. Madrid : Xarait, 1981. 172 p. 1500pts. ISBN 84-85434-12-9
- Artibise, Alan F.J. and Gilbert A. Stelter. Canada's urban past : a bibliography to 1980 and guide to Canadian urban studies. Vancouver : Univ. of British Columbia Press, 1981. 396 p. \$42.00. ISBN 0-7748-0134-4
- Bayley, Stephen. The Albert Memorial : the monument in its social and architectural context. London : Scolar Press, 1981. £12.50. ISBN 0-85967-594-7
- Beard, Geoffrey W. Robert Adam's country houses. Edinburgh : J. Bartholomew, 1981. 32 p. £1.95. ISBN 0-7028-8061-2
- Bergevin, Hélène. Eglises protestantes. Montreal : Libre Expression, 1981. 205 p. (Patrimoine du Québec) \$17.50. ISBN 2-89111-074-9
- Blau, Eve. Ruskinian Gothic : the architecture of Deane and Woodward, 1845-1861. Princeton : Princeton Univ. Press, 1982. 219 p. \$40.00. ISBN 0-691-03984-4
- Roccaccio, Mary, et al. Greenbelt Maryland : a guide to further sources. College Park : Univ. of Maryland, 1981. 43 p. \$5.00. Order from: Archives and Ms. Dept., McKeldin Library, Univ. of Maryland, College Park, MD. 20742
- Borger, Hugo and Frank G. Zehnder. Köln : die Stadt als Kunstwerk. Stadtansichten vom 15. bis 20 Jahrhundert. Cologne : Greven, 1981. 340 p. DM64
- Brusatin, Manlio and Alberto Prandi, eds. Aldo Rossi : teatro del mondo. Venice : CLUVA, 1982. 149 p. (Biblioteca delle arti ; 1) L16000
- Colletta, Teresa. Piazzeforti di Napoli e Sicilia : le carte Montemar e il sistema difensivo meridionale al principio del Settecento. Naples : Edizioni Scientifiche Italiane, 1981. 179 p. (Castelli e fortificazioni nel Mezzogiorno ; 1) L20000
- Cushing, George M. Great buildings of Boston : a photographic guide. New York : Dover, 1982. 130 p. \$7.95. ISBN 0-486-24219-6

- Custozi, Silvano and Murizio Vogliazzo, eds. Muthesius. Milan : Electa, 1981. 133 p. L18000
- Dennerlein, Ingrid. Die Gartenkunst der Régence und des Rokoko in Frankreich. Worms : Werner'sche Verlag, 1981. 242 p. (Grüne Reihe. Quellen und Forschungen zur Gartenkunst ; 4) DM89. ISBN 3-88462-009-6
- Domenech Girbau, Luis. Domenech i Montaner. Madrid : Colegio Oficial de Arquitectos de Madrid, 1981. 60 p. 350pts. ISBN 84-85572-27-0
- Drew, Philip. The architecture of Arata Isozaki. New York : Harper & Row, 1982. 206 p. \$35.00. ISBN 0-06-431550-9
- Fischer, Wend. Architektur in München von 1800 bis heute : die andere Tradition. Munich : Callwey, 1981. 152 p. DM32. ISBN 3-7667-0606-3
- Fullaondo, Juan D. Manuel María Smith e Ibarra, arquitecto. Madrid : Colegio Oficial de Arquitectos de Madrid, 1981. 116 p. 700pts. ISBN 84-85572-23-8
- Fusaro, Florindo. Le biblioteche di Alvar Aalto. Rome : Kappa, 1981. 118 p. L15000
- Ghisetti Giavarina, Adriano. Cola dell'Amatrice architetto e la sperimentazione classicistica del Cinquecento. Naples : Società Editrice Napoletana, 1982. 166 p. (Biblioteca di storia dell'architettura ; 1) L15000
- Giza, Joanne and Catherine F. Black. Great Baltimore houses : an architectural and social history. Baltimore : Maclay & Assoc., 1982. 88 p. \$9.95. ISBN 0-940776-01-4
- González Vilchez, Miguel. Historia de la arquitectura inglesa en Huelva. Seville : Universidad de Sevilla, 1981. 438 p. 1800pts. ISBN 84-7405-185-1
- Gravagnuolo, Benedetto. Adolf Loos : theory and works. New York : Rizzoli, 1982. 228 p. \$50.00. ISBN 0-8478-0414-3
- Grohmann, Alberto. Perugia. Bari : Laterza, 1981. 204 p. (Le città nella storia d'Italia) L20000
- Hines, Thomas S. Richard Neutra and the search for modern architecture : a biography and history. New York : Oxford Univ. Press, 1982. 356 p. \$50.00, \$29.95 paper. ISBN 0-19-503028-1, 0-19-503029-X
- Juste Ocaña, Julio. Arquitectura en Granada después de la guerra 1937-1950. Granada : Juarez, 1981. 250 p. 650pts. ISBN 84-85890-00-0
- Le Corbusier sketchbooks, vol. 3, 1954-1957 / Notes by Françoise de Franclieu. New York : The Architectural History Foundation ; Cambridge, MA : MIT Press, 1982. 86 p. (The Architectural History Foundation/MIT Press series ; 4) \$125.00. ISBN 0-262-12092-5
- Lucchini, Flaminio and Renato Pallavicini. La Villa Poniatowski e la Via Flaminia. Rome : Kappa, 1981. 111 p. L10000
- Lyndon, Donlyn. The city observed, Boston : a guide to the architecture of the hub. New York : Random House, 1982. 317 p. \$18.50, \$7.95 paper. ISBN 0-394-50475-5, 0-394-74894-8
- Merklinger, Elizabeth. Indian Islamic architecture : the Deccan 1347-1686. Warminster (Eng.) : Aris & Phillips, 1981. 146 p. £25.50. ISBN 0-85668-193-8
- Middleton, Robin, ed. The Beaux-Arts and nineteenth century French architecture. Cambridge, MA : MIT Press, 1982. 280 p. \$29.95. ISBN 0-262-13173-0
- Miller, Naomi. Heavenly caves : reflections on the garden grotto. New York : Braziller, 1982. 141 p. \$19.95, \$9.95 paper. ISBN 0-8076-0966-8, 0-8076-0967-6
- Ordine e luogo : progetti del Gruppo S, 1969-1980 / presentazione di Vittorio De Feo. Rome : Kappa, 1981. 111 p. L8500
- Parker, Richard B. A practical guide to Islamic monuments in Morocco. Charlottesville, VA : Baraka Press, 1981. 181 p. Order from: Publisher, P.O. Box 3351, Charlottesville, VA. 22903
- Pougatchenkova, Galina A. Chefs-d'oeuvre d'architecture de l'Asie Centrale XIV-XVe siècle. Paris : Presses de l'UNESCO, 1981. 194 p. F280. ISBN 92-3-201999-X
- Punin, Andrej L. Arkhitekturnye pamiatniki Peterburga : vtoraja polovina XIX veka. Leningrad : Lenizdat, 1981. 1Rb.
- Puppi, Lionello and Mario Universo. Padova. Bari : Laterza, 1982. 302 p. (Le città nella storia d'Italia) L25000
- Purini, Franco. Luogo e progetto. Rome : Kappa, 1981. 319 p. (Città e progetto ; 2) L22000
- Quilici, Vieri. Adalberto Libera : L'architettura come ideale. Rome : Officina, 1981. 238 p. L15000
- Ramírez Martínez, José M. El Románico en la Rioja (obra completa). Logroño : Editorial Ochoa, 1981. 3 vols. 750pts. ISBN 84-7359-104-6
- Ravéreau, André. Le M'Zab, une leçon d'architecture. Paris : Sinbad, 1981. 282 p. (La Bibliothèque arabe) F210 ISBN 2-7274-0060-8
- Roth, Matthew. Connecticut : an inventory of historic engineering and industrial sites. Washington, D.C. : Society for Industrial Archeology, 1981. 279 p.
- Rykwert, Joseph. The necessity of artifice. New York : Rizzoli, 1982. 143 p. (Ideas in architecture) \$28.50. ISBN 0-8478-0402-X
- Sauermost, Heinz J. and Wolf C. von der Mülbe. Istanbuler Moscheen. Munich : Bruckmann, 1981. 256 p. DM46.25. ISBN 3-7654-1830-7
- Stamp, Gavin. Robert Weir Schultz, architect and his work for the Marquesses of Bute. An essay. Rothesay, Isle of Bute : Mount Stuart, 1981. 79 p. £8.50
- Stilgoe, John R. Common landscape of America, 1580-1845. New Haven : Yale Univ. Press, 1982. 429 p. \$29.95. ISBN 0-300-02699-4
- Swartout, Barbara C. Ontario County cobblestones. Canandaigua, NY : Ontario County Historical Society, 1981. 48 p. \$3.50. ISBN 0-941198-01-4. Order from: Publisher, 55 N. Main St., Canandaigua, NY. 14434
- Tigerman, Stanley. Versus : an American architect's alternatives / with critical essays by Ross Miller and Dorothy Metzger Habel. New York : Rizzoli, 1982. 190 p. \$35.00, \$19.95 paper. ISBN 0-8478-0429-1, 0-8478-0433-X
- Wansem, Eva M. Die Münchener Residenz unter Ludwig I : Bildprogramm und Bildausstattungen in den Neubauten. Munich : Stadtarchiv : Wölfle, 1981. 403 p. (Miscellanea Bavarica Monacensia ; Heft. 101) (Neue Schriftenreihe des Stadtarchivs München ; Bd. 122) DM26.80. ISBN 3-87913-115-5
- Whitwell, William L. and Lee W. Winborne. The architectural heritage of the Roanoke Valley. Charlottesville : Univ. Press of Virginia, 1982. 217 p. \$14.95. ISBN 0-8139-0905-9
- Wickberg, Nils E. Senaatintori = Senatstorget = The Senate Square = Der Senatsplatz : Helsinki = Helsingfors. Rungsted Kyst (Denmark) : Anders Nyborg, 1981. 184 p. ISBN 87-85176-16-8

#### REPRINTS AND NEW EDITIONS

- Berveridge, Charles E., comp. The Olmsted legacy of public design. A working list of parks, parkways, public recreation grounds and public places designed by Frederick Law Olmsted, his partners and successors between 1857 and c. 1961. 2d ed., rev. and expanded. New York : National Association for Olmsted Parks, 1981. 13 p. \$6.00. Order from: Publisher, 175 Fifth Ave., New York, NY. 10010
- Cameron, John B. Meadow Brook Hall : Tudor revival architecture and decoration. Rochester, MI : Meadow Brook Art Gallery, Oakland Univ., 2nd printing 1982. 75 p. \$8.95. Order from: Publisher, Rochester, MI. 48063