



# Newsletter

of the Society of Architectural Historians

August 1999 Vol. XLIII No. 4



# Society of Architectural Historians 2000 Awards and Fellowships

The 2000 awards and fellowships will be presented at the Annual Meeting of the SAH in Miami, Florida on Friday, June 16, 2000. Following the presentation, winners will be listed in the *Journal of the Society of Architectural Historians* and the *Newsletter*. For procedures and submission requirements, see the SAH website at <http://www.sah.org> or contact the SAH at tel. 312-573-1365. Award nominations must be sent to committee members by September 15, 1999. Fellowship applications must be received in the SAH office by November 15, 1999, unless otherwise noted.

## Awards

### Alice Davis Hitchcock Award

Endowed in 1949 in honor of his mother by Henry-Russell Hitchcock, former president of the Society and an international leader in architectural history for half a century.

Awarded for the most distinguished work of scholarship in the history of architecture published by a North American scholar during the previous two years.

### Antoinette Forrester Downing Award

Established in 1986 in honor of a national leader in historic preservation during the second half of the 20th century who also was instrumental in developing the architectural survey as a key component in the preservation process.

Awarded for the most outstanding publication devoted to historical issues in the preservation field that enhances the understanding and protection of the built environment in the United States.

### Philip Johnson Award

Established in 1990 and named in 1998 in honor of a distinguished designer who was also instrumental in establishing the architectural exhibition as an important function of museums and who, through such work, has had a major impact on scholarship and practice.

Awarded for the exhibition catalogue that has made the most outstanding contribution to architectural history during the previous two years.

### Founders' Award

Established in 1969 and named in 1970 in honor of the founding members of the Society.

Awarded each year for the best article written by a junior scholar to appear in the previous two years in the *Journal of the Society of Architectural Historians*.

### Spiro Kostof Award

Established in 1993 in honor of a former president of the Society whose innovative scholarship helped establish significant new parameters for the historical study of the built environment.

Awarded each year for the book that, focusing on urbanism and its relationships with architecture, has made the greatest contribution during the past two years to understanding the processes of historical development and change.

## Fellowships

### Carroll L.V. Meeks Fellowship

(formerly the Architectural Study Tour Scholarship)  
Awarded each year to enable a graduate student to participate in the Society's domestic tour. Awards vary depending on tour costs. Application dates vary according to tour schedules.

### Rosann S. Berry Fellowship

Established in 1982 in honor of the Society's Executive Secretary from 1955 to 1980, whose leadership helped bring the organization to maturity.

Awarded to support an advanced graduate student to attend the Annual Meeting of the Society. The 2000 meeting will take place in Miami, June 14-8. The

## SAH Calendar

**Deadline for paper proposals for  
the 53rd Annual Meeting (2000)**  
September 3, 1999

**Domestic Study Tour:  
Ancient Pueblo Sites of the Southwest:  
Native American Art and Architecture  
of New Mexico,  
Arizona, Utah and Colorado**  
Sept. 27-Oct. 3, 1999

**Foreign Study Tour: India**  
December 26, 1999-January 14, 2000

**53rd Annual Meeting**  
Miami, Florida  
June 14-18, 2000

**54th Annual Meeting**  
Toronto, Canada  
April 17-21, 2001

**Cover:** *The Las Vegas Strip is one of the built landscapes featured in Buildings of Nevada, among the forthcoming volumes in the Buildings of the United States series. Photograph by Bret Morgan, from the forthcoming Buildings of Nevada, Oxford University Press. See the Buildings of the United States update on page 4.*

award consists of a \$500 stipend to be used to offset travel costs directly related to the meeting. In addition, the SAH waives the registration fee for the recipient.

#### **George R. Collins Fellowship**

Endowed in 1993 by Christiane Crasemann Collins and the family of the late George R. Collins in honor of the distinguished scholar of architectural and urban history.

Awarded to support the attendance of foreign scholars whose papers on 19th- and 20th-century topics have been accepted for delivery at the Society's Annual Meeting. Awards vary depending upon need.

#### **Edilia and François-Auguste de Montêquin Fellowship**

Endowed in 1991 in honor of his mother by François-Auguste de Montêquin, a distinguished scholar of Latin-American architecture and urbanism, and expanded in 1997 with his bequest.

Awarded to support travel and research annually for a junior scholar (\$2,000) and biannually for a senior scholar (\$6,000) focusing on Spanish, Portuguese, or Ibero-American architecture including colonial architecture produced by Spaniards in the Philippines and in what is today the United States. The Senior Fellowship will next be awarded in 2001.

#### **Spiro Kostof Fellowship**

Established in 1998 by Diane Favro, Richard Ingersoll and Zeynep Celik, this fellowship parallels the Rosann S. Berry Fellowship in providing funds for a graduate student's attendance at the Annual Meeting with a \$500 stipend to offset travel costs.

#### **The Keepers Preservation Education Fund Fellowship**

Endowed in 1989 by William J. Murtagh, first Keeper of the National Register of Historic Places and a leading figure in the preservation movement during the second half of the 20th century.

Awarded to support the attendance of a graduate student in historic preservation at the Society's Annual Meeting. The award consists of a \$500 stipend to be used to offset travel costs directly related to the meeting.

#### **Sally Kress Tompkins Fellowship**

Established in 1989 in honor of the former Deputy Chief of the Historic American Buildings Survey/Historic American Engineering Record whose advocacy of historical research has had a significant impact on that program.

Awarded each year jointly by the Society and the Historic American Building Survey (HABS) of the National Park Service to support the work of an architectural history student on a HABS project. A \$7,500 stipend is provided for the summer. Applications are due January 13, 2000.

## **SAH 2000 Annual Meeting – Reminder and Update**

September 3, 1999 is the deadline for submitting paper proposals for the SAH Annual Meeting, scheduled June 14–18, 2000 at the Biltmore Hotel in Coral Gables, Miami, Florida. For details and a listing of session titles and descriptions, check the April 1999 *Newsletter* or visit the Society's website at <http://www.sah.org>.

For those submitting an abstract to the forthcoming "Public Space in American Cities" session at the Miami 2000 SAH meeting, please note the session chair's change of address: Keith Eggener, Asst. Professor, Dept. of Art History and Archaeology, 109 Pickard Hall, University of Missouri-Columbia, Columbia, MO 65211; tel. 573-882-6711; fax: 573-884-4039. Abstracts sent to the University of Nevada, Las Vegas address given in the original call for papers will be forwarded.

## **Call for Session Proposals**

Society of Architectural Historians  
54th Annual Meeting  
Toronto, Canada  
April 17–21, 2001

Members of the Society and representatives of affiliated societies who wish to chair a session at the 2001 Annual Meeting in Toronto are invited to submit proposals by January 7, 2000 to the General Chair: Diane Favro, Department of Architecture and Urban Design, 1317 Perloff Hall, University of California, Los Angeles, CA 90095-1467; fax: 310-825-8959; email: [dfavro@ucla.edu](mailto:dfavro@ucla.edu). Diane Favro.

Since the principal purpose of the annual meeting remains that of informing the Society's members of the general state of research in their discipline, session proposals covering every period in the history of architecture and all aspects of the built environment are encouraged. Sessions may be theoretical, methodological, thematic, interdisciplinary, pedagogical, revisionist, or documentary in premise, and have broadly conceived or more narrowly focused subjects. In every case, the subject should be clearly defined in critical and historiographic terms, and should be substantiated by a distinct body of either established or emerging scholarship.

Proposals of not more than 600 words including a session title should summarize the subject and its premise. Include name, professional affiliation, address, telephone and fax numbers, e-mail, and a current resume. Consult the Call for Papers for the 2000 Annual Meeting in Miami, published in the April 1999 issue of the *SAH Newsletter*, or available at the SAH website, <http://www.sah.org>, for examples of content.

Proposals will be selected on the basis of merit and the need to organize a well-balanced program. Since late proposals cannot be considered, it is recommended that proposals be submitted and their receipt be confirmed well before the deadline; the General Chair cannot be responsible for last minute submissions, electronic and otherwise, that fail to reach their destination. Authors of accepted proposals will be asked to draft a Call for Papers of not more than 350 words.

# Buildings of the United States: Going and Growing

With at least eight volumes now set for publication within the next 36 months, Buildings of the United States is in the midst of its busiest and most prolific phase yet. This landmark series offers a matchless opportunity to promote the understanding and appreciation of our built environment to the widest possible audiences, in keeping with the Society's mission.

At present, the Nevada, West Virginia and eastern/northern Virginia volumes are in editorial review/ copy-editing and will go to Oxford University Press within six months. All three of these books offer a significantly new "take" on their respective states. While many writers have studied and described such achievements as the glories of Jeffersonian Virginia and the genteel culture so much a part of the state's history, no one has taken the comprehensive view adopted by Richard Guy Wilson in *Buildings of Virginia-Tidewater & Piedmont*. Prof. Wilson has focused on a vast range of considerations and topics, as wide-ranging as the estates of Upperville and the persistent presence and significance of brick construction in elementary and secondary educational facilities throughout the region.



First Congregational Church, Bennington, VT (Lavius Fillmore, architect/master-builder, 1804-06). Photograph by Vermont Division for Historic Preservation, from the forthcoming *Buildings of Vermont*, Oxford University Press.

So too, Al Chamber's *Buildings of West Virginia* and Julie Nicoletta's *Buildings of Nevada* have broken new ground with their documentation of unexpected examples of vernacular and high-style structures in these architecturally underexplored states. From pioneer cabins and abandoned mines to churches, homes, resorts and hotels and university buildings, they have succeeded in capturing it all. Both volumes tell the distinctive histories of places largely unknown to most scholars and link them to the wider story of American architectural experience. These two volumes, along with the first volume of *Buildings of Virginia*, are scheduled for release in 2000 and early 2001.

Following right on the heels of these volumes are those on Rhode Island, Louisiana, Wisconsin and metropolitan Boston. *Buildings of Rhode Island*, magnum opus of the late William Jordy, is in the final stages of editing prior to submission to Oxford this fall. Much credit for this goes to William McKenzie (Mac) Woodward and Ronald Onorato, who have been able to put the legendary scholar's final notes in order, along with preparing the vast cache of photographs, maps and other information necessary to complete the manuscript. William Pierson, BUS co-editor-in-chief emeritus and a co-author with Prof. Jordy of a major architectural survey, has also contributed to the completion of the manuscript. Eagerly awaited by many, including the dozens of prominent scholars who had been his students, this important work should be released in late 2000 or early 2001.

In Louisiana, Karen Kingsley is hard at work on the final preparation of her manuscript. Prof. Kingsley's work has uncovered much of "unknown" Louisiana, ranging from vanished traces of its African-American heritage to whole downtowns of virtually undisturbed commercial buildings, ranging from the Victorian to 1950s contemporary — all of which testify that there is much more to Louisiana than its white-columned plantations and other well-known talismans of the antebellum South.

Under the direction of lead author Jim Draeger, the team from the State Historical Society of Wisconsin is completing the manuscript for *Buildings of Wisconsin*. Bobbie Malone, Director of the Office of School Services at the Society, and her staff have developed an elementary curriculum supplement based on the volume, which may be useful as a model for the development of similar school materials for other BUS volumes. Dr. Malone and BUS Development Director Barbara Reed met in June with Kathryn Bishop Eckert, former State Historic Preservation Officer in Michigan and author of *Buildings of Michigan*, to explore this opportunity and to discuss how BUS can play a role in furthering the SAH com-



*Shadows-on-the-Teche, New Iberia, Louisiana, 1831-34. Photograph by Richard Koch (for HABS), Southeastern Architectural Archive-Tulane University. From the forthcoming Buildings of Louisiana, Oxford University Press.*

mitment to K-12 education. We welcome any SAH members interested in learning how they can assist in moving this exciting effort forward.

Coming into production right after the Wisconsin volume, *Buildings of Massachusetts-Metropolitan Boston* is already deep into its research and writing phase. With vital support from the Massachusetts Historical Commission and an anonymous foundation, lead author Keith Morgan and his team (which includes Naomi Miller, Richard Candee and Roger Reed) are establishing the definitive list of the most important, historic and valuable buildings within a ten-mile radius of the Massachusetts State House. (Cynthia Zaitzevsky is leading the effort for the remainder of the Bay State, which is to follow in the production schedule shortly thereafter.)

It has only been through the considerable generosity of individuals and organizations across the nation that BUS has been able to reach this level of accomplishment. Recent gifts and grants include:

- \$50,000 for *Buildings of Wisconsin*, from the Lynde and Harry Bradley Foundation
- \$21,000 for *Buildings of Massachusetts-Metropolitan Boston*, from the Massachusetts Historical Commission (in addition to a \$15,000 grant last year)
- \$15,000 for *Buildings of Vermont*, from Mr. Laurance S. Rockefeller

\$10,000 for *Buildings of Vermont*, from the Woodstock Foundation  
 \$7,500 for *Buildings of Massachusetts-Metropolitan Boston*, from an anonymous donor

Also vital to BUS has been the dedication of the University of Delaware and the University of Missouri, which have provided two editors-in-chief (Darnie Stillman and Osmund Overby) with research assistants and important in-kind support. The roster of talented and devoted research assistants is too long to list here but includes some of the top young scholars in American architectural history — all of whom have played an important part in moving BUS forward.

The BUS Editorial Board, authors and staff deeply appreciate the ongoing generosity of SAH members, who so tirelessly give of their time and financial support. As the Society moves into the 21st century, BUS is advancing its mission to preserve and celebrate the lessons and treasures of our collective past. The establishment of the Founders Fund, which honors Adolf Placzek and William Pierson, serves as “venture capital” for new and on-going volumes. We encourage SAH members to give their support to BUS through gifts to the Founders Fund.

### **A Special (Double) Issue of *JSAH* Architectural History 1999/2000**

To mark the turn of the century and the millennium, in December 1999 *JSAH* will publish a special double issue.

Contributions will reflect on architectural history over the last three decades, a period of significant transformation in both the institutional settings and intellectual frameworks of the discipline.

The first part of the issue will focus on the institutional frameworks within which the history of architecture operates: the academy, the museum, the research institute, and publishing. The second part will focus on intellectual and methodological frameworks in a series of historiographical essays that examine current scholarship in a number of different fields. The fields themselves are conceived as “sites” of research, and the section itself as mapping part of the rich terrain of contemporary scholarly concerns.

The special issue will take the place of numbers 3 and 4, volume 58 of *JSAH*.



# SAH April 1999 Board Meeting Summary

*The following items were the focus of discussion at the SAH spring board meeting, held in conjunction with the Annual Meeting in Houston, April 14–18, 1999. Some items discussed at the meeting, such as the Treasurer's Report, BUS update, the seating of new board members, and the creation of the honorary position of Society Fellow and selection of a group of honorees, were announced in the June 1999 Newsletter. The intention of the following summary is to inform the membership of major areas of discussion or action by the Society and its board members.*

## Operations

Several items were discussed under this general heading.

President Richard Longstreth proposed a set of explicit guidelines for participation on the Board of Directors. Approved was a statement that will make clear to potential board members that they will be expected to be active and vocal representatives of the membership, and as ambassadors of the Society, who will seek to recruit new members; to attend and participate in all board meetings occurring during their term; to serve on a committee or otherwise assist in operations of the Society when asked; and to contribute, however modestly, to Society fundraising initiatives, to ensure the 100% board participation frequently required by outside funding sources.

The Board agreed, after discussion, that mounting credit card fees will be managed by adding a small surcharge of 1 or 2% to meeting and tour fees. This is a conventional method of covering bank charges that accrue from credit card payments for products and services.

Other discussion in this area focused on the Society's outreach mission, and possible ways that the Society can involve itself in the areas of public history and in K-12 education, where the architectural history component is seldom developed or reviewed by qualified specialists, leading to the broad dissemination of inaccurate information.

## Annual meetings

Both First Vice-President Christopher Mead and Second Vice-President Diane Favro reported on future sites for annual meetings. The 2000 meeting is scheduled for June 14–18 in Miami, and preparations for the 2001 meeting in Toronto are progressing according to schedule. Proposals for future meeting sites include Denver for 2002 and Providence, New Orleans, and Las Vegas as potential locations for subsequent years. It was agreed that the chapters and the general membership should be asked to suggest possible annual meeting sites, cities that would have appropriate facilities as well as individuals willing to assume the important task of general chair and volunteer staff.

Christopher Mead proposed, and the Board concurred, that the graduate student midday session at annual meetings should be organized in the future by

the individual occupying the graduate student seat on the Board of Directors (at present Rebecca Ginsberg, University of California, Berkeley).

## Fellowship Support for Annual Meeting

The President noted that fellowship support for the Annual Meeting has increased, bolstered in part by members' donations at the time of meeting preregistration. The option to contribute \$10 (or more) to the Berry, Kostof and Collins fellowships garnered a total of \$1,426. This is an important advance, because there is a need for yet more support, particularly for graduate students and scholars traveling from outside the U.S.

## Tours, foreign and domestic

The Society's next tour will be "Ancient Pueblo Sites of the Southwest," scheduled for fall 1999. The upcoming foreign tour to India, which will span our move into the 21st century at the end of December, is already full and waitlisted. Tentative future tour destinations include Brazil (Summer 2000), the Netherlands (Summer 2001), and Turkey (2002). Other possible foreign destinations include Scotland; Syria and Jordan; Sicily and Malta; Southeast Asia; Morocco and Tunisia; southern France; and Cuba. Domestic destinations proposed include Long Island; Hawaii; Mt. Desert Island, Maine; Las Vegas; the architecture of Fay Jones; and the designs of Wurster, Julia Morgan and the Bay Region.

The Board also was presented with an extensive report on possible expansion of the Society's travel program, prepared by Stephen Harby. At last November's meeting, the Board began discussing the possibility of engaging in a more active tour program to benefit the SAH and its membership, prompted by the increased demand for specialized educational travel, SAH's unique identity, and its unique assets as a group of experts on the built environment. By incrementally expanding the travel program, the report suggested that the SAH could benefit by enhancing the benefits of membership, generating additional revenue, building member commitment, and recruiting new members. There were two levels of discussion. One focused on the details of expansion, including the ability to find members willing to lead tours, even if a small honorarium was provided, and the pressures that administering additional tours would place on the Chicago staff. Another brought focus to underlying issues of the Society's identity, purpose, and the most effective mechanisms for outreach. The high costs of recent trips were discussed, and expansion of the tour program as a means of offering a group of low and moderate-priced was noted. The Board agreed to continue the discussion at the November meeting, and Stephen Harby was asked to consider possible ways to solicit membership feedback in the interim.

## Publications

The *Journal* reported a series of staffing changes. The new copy editor is Moira Duggan. Hilary Ballon (Columbia University) will complete her term as a

book review editor for foreign topics in December 1999 and will be succeeded by Alina Payne (University of Toronto); Abigail Van Slyck (University of Arizona) will complete her term as book review editor of American topics with the March 2000 issue and will be succeeded by Pamela Simpson (Washington and Lee University). Barry Bergdoll's (Columbia University) term as exhibition review editor will end with the March 2000 issue, and a successor for this position has not yet been located. Pamela Scott has stepped down as advertising manager for the *Journal*, and Helen Tangires (CASVA) has assumed the newly created position of Publications Advertising Manager, effective February 2000. She will be responsible for soliciting advertising for the *Journal* as well as the *Newsletter* and website. This position will have a three-year, renewable term.

The Board approved a policy that would clarify responsibilities for editing and production of the *SAH Newsletter*, as well as a policy that will make clear to those requesting listing in the *Newsletter* that non-profit groups are eligible for free notices, but that tours or events operated by for-profit institutions must pay advertising rates. All notices will be accepted as space permits, and will be edited to conform to *Newsletter* style.

#### **Listserv and Website**

Cynthia Field, Listserv Moderator, reported on the increasing size of listserv membership and her efforts to keep the volume and quality of postings at the moderate level desired by most subscribers. Jeffrey Cohen, Website Editor, and chair of the SAH Electronic Media Committee, reported on website activity, including the image exchange project and the addition of new bibliographic links. He proposed inclusion of a training session and/or demonstration of electronic media as a regular feature of future Annual Meetings. Discussion raised issues of the expense and logistical problems of running such events and the probable need for an educational institution to sponsor such activities. The Board encouraged him to investigate the possibility of some type of electronic media activity at the 2000 Annual Meeting in Miami.

#### **Finance and Development Committee**

Under the direction of Robert B. Rettig, former SAH Treasurer, the committee offered both a report and some thoughts as to future direction. This group has the mandate of developing a comprehensive fundraising program for the Society, which includes bequest and planned giving opportunities, as well as establishing an endowment fund. Henry Kuehn will succeed Robert Rettig as chair of this committee.

#### **Membership Committee**

It was noted that membership numbers have been dropping slowly, by 116 in 1997, and by 53 in 1998 (from 3,291 members in 1996, to 3,175 in 1997, and 3,122 in 1998). At the time of the meeting, all renewals for 1999 had not yet been received, so an accurate tally of the current year's statistics was not possible. For the first time, members not renewing will be surveyed to determine why they chose to terminate membership. In addition, a number of mail-

ings targeting new members were aimed at individuals and institutions abroad, as well as graduate students at American and Canadian universities. The SAH office also sent membership solicitations to a list of house museum curators with a cover letter from Membership Committee Chair Peter Reed addressing curatorial colleagues. Other future projects include design of a new brochure; an appeal to the AIA's Historic Resources Committee; a mailing to art and architecture librarians; creation of a notice about the Society and the benefits of membership, suitable for electronic bulletin boards and listservs used by architects and preservationists; and an appeal to current SAH members to consider a gift of membership for new graduate students at their institutions.

#### **Preservation Committee**

The Preservation Committee advanced two resolutions concerning the preservation of the 1950s Pittsburgh Airport, which is located adjacent to the new structure. In addition, the committee reported its involvement in efforts to save Maple Cottage, designed by A.J. Davis, from demolition by Yale University. The committee has also involved itself with the landmarking process for the Rockingham Meetinghouse in Vermont, and the long-derelict Greek-Revival church designed by A.J. Davis in Newburgh, New York.

#### **Publications Committee**

The Publications Committee, chaired by Judy Metro (Yale University Press) presented two items for Board approval. The Board approved an expansion of the copyright statement to appear in *The Journal of the Society of Architectural Historians*, which makes explicit that SAH not only has the authority but the intention to protect its copyright from infringement and to safeguard the intellectual property of its authors. The revised copyright notice is also intended to make clear permission to photocopy articles for educational and classroom use, thus making it unnecessary for professors to write the Society for permission to photocopy articles for use in courses. Also approved was a legally binding letter of agreement between *JSAH* and contributors of articles to *JSAH*, which spells out the rights and obligations of both authors and the *Journal*.

#### **Call for Nominations to the SAH Board**

The 1999 SAH Nominating Committee seeks your suggestions for new SAH Board members who would begin their terms in June 2000. The Committee also invites recommendations for the position of Second Vice President. The final slate of nominees should provide representation of the diversity of the SAH's membership. Self-nominations are welcome. Please send nominations by October 1, 1999 to Ken Breisch, Chair, SAH Nominating Committee, School of Architecture, 204 Watt Hall, University of Southern California, Los Angeles, CA 90089-0291; fax: 213-740-8884; email: breisch@usc.edu.

Nominations should include reasons for proposing a nominee, as well as individual's name, address, telephone number, and title or affiliation.

## Last Chance to Register for the 1999 SAH Domestic Study Tour to Four Corners

A limited number of spaces are still available on the Society's 1999 SAH Domestic Study Tour, "Ancient Pueblo Sites of the Southwest: Native American Art and Architecture of New Mexico, Arizona, Utah and Colorado," scheduled for Monday, September 27 to Sunday, October 3, 1999. This tour to the Four Corners region, led by J.J. Brody, professor emeritus of art history at the University of New Mexico, will bring focus to a region of stunning natural and built landscapes. Jean Brody, an anthropologist specializing in the region's ethnobotany, ecology and social history, will also lend her expertise. For additional information or to reserve a space, contact Angela Fitzsimmons at the SAH Chicago office, tel. 312-573-1365; email: afitzsimmons@sah.org.

## MEMBER NEWS

**Jill Elizabeth Caskey**, assistant professor at the University of Toronto, has been awarded a 1999 - 2000 J. Paul Getty Postdoctoral Fellowship in the History of Art and the Humanities for her project "Eye of a Needle: The Rufolos of Ravello and the Art of Wealth and Splendor."

**Swati Chattopadhyay**, assistant professor at the University of California, Santa Barbara, has been awarded a 1999 - 2000 J. Paul Getty Postdoctoral Fellowship in the History of Art and the Humanities for her project "Depicting Calcutta: Colonial Conflict and the Emergence of a Nineteenth-Century Modernity."

**John Clagett** is Director of the Center for Ecumenical Research in the Arts and Sciences, which is currently producing the traveling exhibit "The Coincidence of Opposing Extremes" (see Exhibitions).

**Samuel D. Gruber**, president of the International Survey of Jewish Monuments, is the author of the newly-released *Synagogues*. Part of Metrobooks' Great Architecture Series the book is a comprehensive overview of the architectural achievements of synagogue builders from around the world, spanning two millennia.

**Stephen Harby** of Stephen Harby, Architect, Santa Monica, California has been awarded the American Academy in Rome's 1999 - 2000 Marion O. and Maximilian E. Hoffman Fellowship.

**Wolfgang Jung**, associate professor at the Fachhochschule Frankfurt am Main, has been awarded a 1999 - 2000 J. Paul Getty Postdoctoral Fellowship in the History of Art and the Humanities for his project "On Borromini's 'Furor Matematicus'."

**Daniel D. Reiff**, Department of Art, State University of New York, College at Fredonia, has received the 1999 Ruth Emery Book Award, presented by the Victorian Society in America, for his book *Architecture in Fredonia, New York, 1811 - 1997* (revised and enlarged edition, Fredonia Preservation Society, 1997).

**Dell Upton**, professor of architecture, University of California, Berkeley and **Chris Wilson**, J.B. Jackson Professor of Cultural Landscape Studies at the University of New Mexico, have been awarded the Vernacu-

lar Architecture Forum's 1999 Abbott Lowell Cummings Award for their books, *Architecture in the United States* (Oxford University Press, 1998) and *The Myth of Santa Fe: Creating a Modern Regional Tradition* (University of New Mexico Press, 1997), respectively.

## OBITUARIES

**Robert L. Alexander**, professor emeritus of art history at the University of Iowa, died August 14, 1998 in Iowa City, Iowa. Alexander was senior editor of *The Papers of Robert Mills*, a large, cooperatively-sponsored project stemming from a symposium he organized at the H. F. du Pont Winterthur Museum in 1982. From offices within the Smithsonian Institution, the project produced a microfilm guide and index to several thousand manuscripts relating to the career of the native-born and American-trained proponent of the Greek Revival and designer of the Washington Monument in the nation's capital. He contributed the authoritative essay on Robert Mills's early work in Philadelphia and Baltimore in *Robert Mills, Architect*, edited by John M. Bryan (The American Institute of Architects Press, 1989); his monograph on Maximilian Godefroy, *The Architecture of Maximilian Godefroy* (The Johns Hopkins University Press) was published in 1974. Apart from his specialization in the history of American neoclassical architecture, he was greatly interested in Anatolia. His notes on Hittite cultural artifacts appeared in the *Journal of the British Institute of Archaeology at Ankara* and the *Journal of Near Eastern Studies*, among other publications. At the time of his death, he was completing research on the late 18th- and early 19th-century French engineer and architect Joseph François Mangin, designer of New York Harbor fortifications and work on architectural projects that included the Wall Street Presbyterian Church, Old St. Patrick's and City Hall in New York City. A long-time member of the SAH, Alexander and his wife, the late Margaret Alexander, a noted classical mosaics scholar, led the ambitious SAH foreign tour of Tunisia in 1990.

*Elisabeth Walton Potter  
Salem, Oregon*

**Sara Holmes Boutelle** died at the age of 90 on May 26, 1999, in Santa Cruz, where she had lived since the mid-1970s. Boutelle was renowned for rediscovering and reassessing the architectural legacy of Julia Morgan, and her pioneering work on this prolific but neglected designer paved the way for long overdue recognition of Morgan's brilliant aesthetic and structural innovations. Boutelle did not view Morgan through the single lens of architectural pathbreaker for her sex, but also considered her life as reflective of the larger culture of her time and place.

Sara Boutelle was born in 1909 in Aberdeen, S.D., and received the B.A. from Mount Holyoke College in 1931. She taught history at the Brearley School in New York City, and subsequently was a visiting lecturer at the University of California in Santa Cruz and at Williams College. Widely admired for her lively and informative lectures, she inspired generations of students to study architecture and its history.

*Julia Morgan Architect* (New York: Abbeville Press) appeared in 1988; it is now in its third printing. This



handsome monograph remains the definitive work on the first woman of any nationality to receive a diploma from the Ecole des Beaux Arts. Because Morgan avoided interviews and did not save her papers, research was a decided challenge; Boutelle based her conclusions on discussions with surviving colleagues and most of all, on close and sensitive study of the buildings themselves and the remaining documents. Boutelle's dedication to her self-appointed task enabled her to reconstruct a career that was significant for America just at the period when architecture was becoming a profession. At her death Boutelle was editing a previously unknown diary written by Morgan in 1938-39, covering a trip along the Mediterranean coast. In it she compared her own buildings to those she saw in France and Italy, making the travel journal an extremely rare record of Morgan's architectural intentions.

Boutelle was active in historic preservation in California, and contributed to numerous publications, including *Women in American Architecture* (1976), *Capitola Architectural Survey* (1986), *Architecture: A Place for Women* (1989), and the periodicals *Heresies*, *California Monthly*, and the *AIA Journal*, among others. I first became acquainted with this gracious and ebullient woman, who had a precious gift for friendship, when I saw a notice from "The Julia Morgan Society," and subsequently learned that Sara and the society were one and the same.

Helen Searing  
Smith College

## CHAPTER NEWS

**John Earley in Context: Concrete Construction and Decoration in the U.S., 1910-1945** is the topic of the Latrobe Chapter of the Society of Architectural Historians' Fourth Biennial Symposium on the Historic Development of Metropolitan Washington, D.C., scheduled for March 2001 in Washington, D.C. Known for his 1935 Polychrome Houses in Silver Spring, MD (prefabricated from structural slabs), Earley collaborated with distinguished architects on a vast array of decorations for civic, religious and commercial and residential structures nationwide, including mosaic aggregates at the Justice Department Building and at the Church of the Sacred Heart on Sixteenth Street, NW, both in Washington DC; Laredo Taft's Fountain of Time, Chicago; the Louisiana State University campus; the national House of Worship of the American Baha'is, Wilmette, IL; and the Edison Memorial Tower in Menlo Park, NJ. Organizers seek papers on the work of D.C. concrete fabricator and "architectural sculptor" John J. Earley and more generally on the innovative tectonic and decorative use of concrete in the United States between 1910 and 1945. Papers on parallel trends in concrete construction and decoration might consider innovative concrete engineering and decorative use, low-cost housing, or commercial and institutional applications of concrete construction. Send a 400-word abstract and cv to Dr. Isabelle Gournay, President, Latrobe Chapter, SAH School of Architecture University of Maryland College Park, MD 20782. For additional information, contact Isabelle Gournay at tel./fax: 301-699-9418 or email: ig9@umail.umd.edu. *Deadline: November 30, 1999.*

## SAH Newsletter Listing Policy

The SAH Newsletter offers, as space permits, free listing of events relevant to the mission of the Society and the interests of its membership, provided they are sponsored by non-profit institutions or agencies. These may include calls for papers and submissions, conferences, special programs and tours, and exhibitions. Events organized or sponsored by for-profit or non-profit groups may be listed as classified advertisements, at per-word or display advertising rates.

## GRANTS AND FELLOWSHIPS

**2000-2001 Fulbright Awards for U.S. Faculty and Professionals.** Opportunities for lecturing or advanced research in nearly 130 countries are available to college and university faculty and professionals outside academe. U.S. citizenship and the Ph.D. or comparable professional qualifications are required. For lecturing awards, university or college teaching experience is expected. Foreign language skills are needed in some countries, but most lecturing assignments are in English. For information and application, contact the USIA Fulbright Scholar Program Council for International Exchange of Scholars, 3007 Tilden St., N.W., Ste. 5L, Box GNEWS, Washington, DC 20008-3009; tel. 202-686-7877; email: [apprequest@cies.iie.org](mailto:apprequest@cies.iie.org) (request for application materials only); or visit the website at <http://www.cies.iie.org>. *Deadlines: August 1, 1999 for lecturing and research grants in academic year 2000-2001; November 1, 1999 for international education and academic administrator seminars; January 1, 2000 for NATO advanced research fellowships and institutional grants.*

**The Milka Bliznakov Prize**, offered by the International Archive of Women in Architecture (IAWA), is a two-stage competition. Proposals for original projects can include study, research, or scholarly work, relative to the IAWA collection, and which contribute to and advance the recognition of women's contributions in design. Projects may include exhibition boards, video/digital or photographic presentations of illustrated essays, and traditional papers. For the first stage, the IAWA Board of Advisors will select up to five proposals. Authors of the selected proposals will be invited to continue their projects to compete in Stage Two for a prize of \$1,000. Send proposals for Stage One, a 250-500 word abstract, to the Executive Committee of the IAWA, c/o Donna Dunay, AIA, IAWA Chair, 202 Cowgill Hall (0205), Blacksburg, Virginia 24061; email: [ddunay@vt.edu](mailto:ddunay@vt.edu). For more information on the IAWA and the Milka Bliznakov Prize, see the website at <http://spec.lib.vt.edu/spec/iawa/BlizPrize.html>. *Deadline: September 13, 1999.*

**Woodrow Wilson International Center for Scholars, Washington, DC. Fellowships in the Humanities and Social Sciences, 2000-2001.** The center annually awards residential fellowships to approximately 20 individuals with outstanding project proposals in the humanities and social sciences on national and international issues. The Center especially welcomes projects likely to foster communication between the world of ideas and the world of public affairs. Men and women from any country and from a wide variety of backgrounds may apply. Applicants must hold a doctorate or have equivalent professional accomplishments. Fellowships are normally for an academic year. Limited funds make it desirable for most applicants to seek supplementary sources of funding. The average support is \$44,000, inclusive of travel expenses and 75 percent of health insurance premiums for Fellows, their spouses and their dependent children. For application materials write to: Fellowships Office, Woodrow Wilson Center, One Woodrow Wilson Plaza, 1300 Pennsylvania Ave., NW, Washington, DC 20004-3027; tel. 202-691-4170; fax: 202-691-4001; email: fellowships@wwic.si.edu; or visit the website at <http://wwics.si.edu>. *Deadline: October 1, 1999.*

**The American Council of Learned Societies (ACLS)** announces its fellowship and grant competitions to be held in 1999-2000. These programs include the **Frederick Burkhardt Residential Fellowships for Recently Tenured Scholars, ACLS Fellowships (types vary), Contemplative Practice Fellowships, Henry Luce Foundation/ACLS Dissertation Fellowships in American Art, CSCC China Program Fellowships, and East European Fellowships**, two of which are detailed in separate entries below. Detailed information and application forms are now available online at <http://www.acls.org/fel-comp.htm>. A hard copy of the application form may be requested by contacting the Office of Fellowships and Grants, ACLS, 228 East 45th Street, New York, New York 10017-3398; fax: 212-949-8058; email: grants@acls.org. Any application request must contain the following information: 1) Highest academic degree held and date received; 2) Country of citizenship or permanent legal residence; 3) Academic position and institution; 4) Field of specialization; 5) Proposed subject of research; 6) Specific award program for which application is requested. *Deadlines: various (ranging from October 1, 1999 to November 15, 1999).*

**ACLS/Frederick Burkhardt Residential Fellowships for Recently Tenured Scholars.** Thanks to the generous assistance of the Andrew W. Mellon Foundation, the ACLS announces the availability of a small number of new Frederick Burkhardt Residential Fellowships for Recently Tenured Scholars engaged in long-term, unusually ambitious projects in the humanities and related social sciences. The ACLS will award approximately 9 Burkhardt Fellowships per year in this and the next two years. Each fellowship carries a stipend of \$65,000, and supports an academic year of residence at any one of nine national residential research centers, followed by an additional period of support guaranteed by the recipient's institution. The selection committee may, in an exceptional case, approve an outstanding application from a scholar who may be unable, for

compelling personal reasons, to leave the home campus for an academic year. This year's successful applicants may take up the fellowship in 2000-2001 or in either of the succeeding two academic years. These new Fellowships are in addition to the 60 offered through the central ACLS Fellowship Program. For details of the overall structure of support, and additional information about the nature and intent of the Burkhardt fellowship program, as well as to request application materials, contact the Office of Fellowships and Grants, ACLS, 228 East 45th Street, New York, NY 10017-3398; fax: 212-949-8058; email: grants@acls.org. Also, see the website at <http://www.acls.org/ex-burk.htm>. *Deadline: October 1, 1999.*

**U.S.-China Scholar Exchange Funding.** The Committee on Scholarly Communication with China, administered by the American Council of Learned Societies, will offer 1999 competitions supporting study and research during the 2000-2001 academic year. Two different programs are offered. **The National Program for Advanced Study and Research in China** supports the research of Ph.D. candidates and scholars in the humanities and social sciences in China, excluding Hong Kong and Macau. U.S. citizens and permanent residents are eligible to apply. Funding is provided by the NEH and the United States Information Agency. *Deadline: October 15, 1999.* **Chinese Fellowships for Scholarly Development** support the research of Chinese students and scholars in the humanities and social sciences in the United States. Only scholars or students from the People's Republic of China are eligible. U.S. scholars may apply for support for a Chinese scholar with a M.A., Ph.D. or equivalent from a Chinese institution in the humanities or social sciences to carry out one semester or one year of individual or collaborative research in the U.S. Chinese scholars may not apply directly or have visited the U.S. previously for five months or more, or be currently enrolled in degree programs. Also, U.S. universities may nominate one of their first-year graduate students from the People's Republic of China in any discipline of the humanities and social sciences to compete for a two-year fellowship to continue work toward the degree. Funding is provided by the Starr Foundation and the Li Foundation. *Deadline: November 1, 1999.* For applications, contact the Office of Fellowships and Grants, ACLS, 228 East 45th Street, New York, NY 10017-3398; fax: 212-949-8058 (attn. Fellowship Office); email: grants@acls.org. Requests for an application form must contain the following information: 1) highest academic degree held and the date received; 2) country of citizenship or permanent legal residence; 3) academic or other position; 4) field of specialization; 5) proposed subject of research; 6) proposed date for beginning tenure of the award and duration requested; 7) specific award program for which application is requested; and 8) graduate students should also include current level of graduate study, department and institution where enrolled, and where the planned work would be conducted. *Deadlines: various (listed above).*

**NEH Summer Stipends.** The National Endowment for the Humanities Summer Stipends support two  
**Grants and Fellowships** (continued on page 13)

# Book List

AUGUST 1999

Recently published architectural books selected by Judith Holliday, Librarian, Fine Arts Library, Cornell University, jeh11@cornell.edu

- XVI Bienal Colombiana de Arquitectura 1998. Bogota: Villegas Editores, 1998. 247 p. 958-9393-66-7
- Adolf Loos 1870-1933 : 40 Wohnhäuser, Bauten und Projekte von Adolf Loos, Studienarbeiten an der Technischen Universität München = 40 houses, buildings and projects by Adolf Loos, study projects from the Technological University in Munich. Salzburg: Verlag A. Pustet, 1998. 116 leaves. 3-7025-0380-3
- Andia, Béatrice de and Géraldine Rideau. *Paris et ses théâtres : architecture et décor*. Paris: Action artistique de la Ville de Paris, 1998. 238 p. (Collection Paris et son patrimoine) F290. 2-905118-98-9
- Arnold, Dana. *The Georgian country house : architecture, landscape and society*. Stroud: Alan Sutton, 1998. 210 p. 0-7509-1590-0
- Barral i Altet, Xavier. *The romanesque : towns, cathedrals and monasteries*. New York: Taschen, 1998. 237 p. (Taschen's world architecture) \$29.99. 3-8228-7201-6
- Bencivenni, Mario and Massimo De Vico Fallani. *Giardini pubblici a Firenze dall'Ottocento a oggi*. Florence: Edifir, 1998. 414 p. L120.000. 88-7970-063-4
- Beyond the minimal*. London: Architectural Association, 1998. 102 p. (Current practices; 1) £25.00. 1-870890-83-3
- Bishir, Catherine W., et al. *A guide to the historic architecture of western North Carolina*. Chapel Hill : Univ. of North Carolina Press, 1999. 471 p. (The Richard Hampton Jenrette series in architecture and the decorative arts) \$34.95. 0-8078-2465-8
- Boissière, Olivier. *Les maisons du XXe siècle*. Paris : Terrail, 1998. 207 p. F149. 2-87939-111-3
- Brawne, Michael. *The Getty Center : Richard Meier & Partners*. London : Phaidon, 1998. 120 p. (Architecture in detail) £19.99. 0-7148-3799-7
- Cameron, Catherine M. *Hopi dwellings : architectural change at Orayvi*. Tucson: Univ. of Arizona Press, 1999. 159 p. \$39.95. 0-8165-1781-9
- Chara Zaraceda, Oscar and Viviana Caparo Gil. *Iglesias del Cusco : historia y arquitectura*. Cusco: Editorial Universitaria UNSAAC, 1998. 148 p.
- Claude Vasconi : architectures européennes : Ausstellung April-Mai 1998. Berlin: Aedes Galerie, 1998. 84 p.
- Collovà, Roberto. *Lisbona 1998 Expo*. Turin: Testo & immagine, 1998. 93 p. (Universale di architettura; 45) L14.000. 88-86498-54-3
- Cresti, Carlo and Claudio Rendina. *Ville e palazzi di Roma*. Udine: Magnus, 1998. 397 p. L180.000. 88-7057-158-0
- Culbertson, Margaret. *Texas houses built by the book : the use of published designs, 1850-1925*. College Station : Texas A & M Univ. Press, 1999. 129 p. (Sara and John Lindsey series in the arts and humanities) \$39.95. 0-89096-863-2
- David, Massimiliano, ed. *Frammenti di Roma antica : nei disegni degli architetti francesi vincitori del Prix de Rome 1786-1924*. Novara: Istituto geografico De Agostini, 1998. 223 p. L150.000. 88-415-5841-5
- De Long, David, ed. *Frank Lloyd Wright and the Living City*. Weil am Rhein: Vitra Design Museum, 1998. 334 p. 3-931936-11-2
- Feireiss, Kristin, ed. *8 & Willem : junge französische Architektur*. Berlin: Aedes West, 1998. 52 p. DM27
- Fin qui tutto bene : 5 + 1 architetti associati, progetti in gruppo = Jusqu'ici tout va bien : 5 + 1 architectes associés, projets de groupe*. Sestri Levante (Genoa): Joshua, 1998. 97 p. (JA Joshua architettura) L10.000. 88-86572-08-5
- Francesco Venezia, l'architettura, gli scritti, la critica*. Milan : Electa, 1998. 252 p. (Documenti di architettura; 114) L85.000. 88-435-6442-0
- Frazer, Alfred, ed. *The Roman villa : villa urbana. First Williams Symposium on Classical Architecture ... April 21-22, 1990*. Philadelphia: University Museum, Univ. of Pennsylvania, 1998. 110 p. (University Museum monograph; 101) (University Museum symposium series; v. 9) 0-924171-59-6
- Gandelsonas, Mario. *X-urbanism : architecture and the American city*. New York: Princeton Architectural Press, 1998. 189 p. \$37.50. 1-56898-151-1
- Gopnick, Blake and Michael Sorkin. *Moshe Safdie : Habitat '67, Montreal*. Turin: Testo & immagine, 1998. 93 p. (Universale di architettura; 35) L14.000. 88-86498-42-X
- Gurrieri, Francesco. *Giovanni Battista Bassi : esegesi per frammenti*. Turin: Testo & immagine, 1998. 92 p. (Universale di architettura; 36) L14.000. 88-86498-43-8
- Hart, Vaughan and Peter Hicks, ed. *Paper palaces : the rise of the Renaissance architectural treatise*. New Haven : Yale Univ. Press, 1998. 414 p. \$45.00. 0-300-07530-8
- Heathcote, Edwin. *Monument builders : modern architecture and death*. Chichester: Academy Editions, 1999. 224 p. £50.00. 0-471-98368-3
- Hession, Jane King, et al. *Ralph Rapson : sixty years of modern design*. Afton, MN: Afton Historical Society Press, 1999. 235 p. \$35.00. 1-890434-14-0
- Hilderbrand, Gary R. *The Miller Garden : icon of modernism*. Washington, D.C.: Spacemaker Press, 1999. 63 p. (Landmarks; 09) \$19.95. 1-888931-07-8
- Höhns, Ulrich, ed. *Rudolf Schroeder : neues Bauen für Kiel 1930-1960*. Hamburg: Dölling und Galitz, 1998. 120 p. 3-933374-07-3
- Icher, François. *Building the great cathedrals*. New York: Abrams, 1998. 200 p. Trans. of Oeuvriers des cathédrales. \$49.50. 0-8109-4017-5
- Jaggi, Carola. *San Salvatore in Spoleto : Studien zur spätantiken und frühmittelalterlichen Architektur Italiens*. Wiesbaden: Reichert, 1998. 332 p. (Spätantike-frühes Christentum-Byzanz: Reihe B. Studien und Perspektiven; Bd.4) 3-89500-078-7
- Jodidio, Philip. *Santiago Calatrava*. New York: Taschen, 1998. 175 p. 3-8228-7883-9
- Juvanec, Borut. *Arhitektura pri Lenartu*. Lenart: Jasama, 1998. 136 p. 961-90590-0-X
- Kamel Louafi : die Gärten der Weltausstellung auf dem Kronsberg, Expo 2000 Hannover = Les jardins de l'Exposition universelle sur le Kronsberg, Expo 2000 Hannover = The gardens of the World Fair on the Kronsberg, Expo 2000 Hanover. Berlin: Aedes East, 1998. 64 p.
- Kas Oosterhuis, architect : Ilona Lénárd, visual artist. Rotterdam: O10 Publishers, 1998. Unpaged. 90-6450-298-6
- Kleijn, Koen. *Nederlandse bouwkunst : een geschiedenis van tien eeuwen architectuur*. Alphen aan den Rijn: Atrium, 1999. 320 p. 90-6113-843-4
- Laird, Mark. *The flowering of the landscape garden : English pleasure grounds, 1720-1800*. Philadelphia: Univ. of Pennsylvania Press, 1999. 446 p. (Penn studies in landscape architecture) \$49.95. 0-8122-3457-X
- Lapi Ballerini, Isabella and Litta Maria Medri. *Artifici d'acqua e giardini, la cultura delle grotte e dei ninfei in Italia e in Europa : atti del V Congresso Internazionale sui parchi e giardini storici*. Florence: Centro Di, 1998. 421 p. L150.000. 88-7038-329-6
- Leach, Neil, ed. *Architecture & revolution : contemporary perspectives on Central and Eastern Europe*. New York : Routledge, 1999. 238 p. 0-415-13914-7

- Lima : centro storico. Lima, Peru: Municipalidad Metropolitana de Lima, 1998. 336 p.
- Longstreth, Richard. *The drive-in, the supermarket, and the transformation of commercial space in Los Angeles, 1914-1941*. Cambridge, MA: MIT Press, 1999. 248 p. \$55.00. 0-262-12214-6
- Luís Cristino da Silva : *arquitecto*. Lisbon: Fundação Calouste Gulbenkian, Centro de Arte Moderna José de Azeredo Perdigão, 1998. 235 p. 972-635-107-3
- Mariani, Carolina, ed. *Alfonso Mercurio : opere e progetti = Works and projects*. Milan: Electa, 1998. 238 p. L160.000. 88-435-6534-6
- Marras, Amerigo, ed. *ECO-TEC : architecture of the in-between*. New York: Princeton Architectural Press, 1999. 137 p. \$15.95. 1-56898-159-7
- Matthews, Henry. *Kirtland Cutter : architect in the land of promise*. Seattle: Univ. of Washington Press, 1998. 438 p. \$60.00. 0-295-97609-8
- Maxwell, Robert. *James Stirling/Michael Wilford*. Boston : Birkhäuser, 1998 . 207 p. \$29.95. 0-8176-5291-4
- Mead, Christopher Curtis. *The architecture of Bart Prince : a pragmatics of place*. New York: Norton, 1999. 180 p. \$60.00. 0-393-73032-8
- Miotto, Luciana. *André Lurçat : scuola a Villejuif*. Turin: Testo & immagine, 1998. 92 p. (Universale di architettura; 34) L14.000. 88-86498-41-1
- Mollenhoff, David V. and Mary Jane Hamilton. *Frank Lloyd Wright's Monona Terrace : the enduring power of a civic vision*. Madison : Univ. of Wisconsin Press, 1999. 323 p. \$55.00. 0-299-15500-5
- Morresi, Manuela. *Piazza San Marco : istituzioni, poteri e architettura a Venezia nel primo Cinquecento*. Milan: Electa, 1999. 122 p. (Documenti di architettura; 117) L65.000, 88-435-6695-4
- Morrone, Francis. *An architectural guidebook to Philadelphia*. Salt Lake City: Gibbs Smith, 1999. 288 p. \$19.95. 0-87905-890-0
- Die neue Österreichische Botschaft in Berlin = The new Austrian Embassy in Berlin, Architekt Prof. Hans Hollein : Ausstellung in der Galerie Aedes East April-Mai 1998*. Berlin : Aedes, 1998. 47 p. DM27
- Ostermann, Patrick. *Romanische Sakralarchitektur zwischen Maas und Aisne*. Hildesheim: Olms, 1998. 2 vols. 3-487-10511-X
- Outside the pale : the architecture of Fay Jones*. Fayetteville: Univ. of Arkansas Press, 1999. 94 p. \$18.00. 1-55728-543-8
- Payne, Alina Alexandra. *The architectural treatise in the Italian Renaissance : architectural invention, ornament, and literary culture*. New York: Cambridge Univ. Press, 1999. 343 p. \$75.00. 0-521-62266-2
- Peterson, Fred W. *Building community, keeping the faith : German Catholic vernacular architecture in a rural Minnesota parish*. St. Paul: Minnesota Historical Society Press, 1998. 196 p. \$39.95. 0-87351-368-1
- Pozzana, Mariachiara, ed. *I giardini del XX secolo : l'opera di Pietro Porcinai*. Florence: Alinea, 1998. 214 p. (Manuali; 35) L50.000. 88-8125-201-5
- Raynaud, Dominique. *Architectures comparées : essai sur la dynamique des formes*. Marseille: Parenthèses, 1998. 164 p. F160. 2-86364-089-5
- Roussel, Francis. *Nancy, architecture 1900*. Nouv. Ed. Metz: Editions Serpenoise, 1998. 3 vols. F690. 2-87692-384-X
- Sacchi, Livio. *Daniel Libeskind : Museo ebraico, Berlino*. Turin: Testo & immagine, 1998. 90 p. (Universale di architettura; 47) L14.000. 88-86498-56-X
- Satler, Gail. *Frank Lloyd Wright's living space : architecture's fourth dimension*. Dekalb, IL: Northern Illinois Univ. Press, 1999. 194 p. \$38.00. 0-87580-245-1
- Sbriglio, Jacques. *Le Corbusier : la villa Savoye = The villa Savoye*. Boston: Birkhäuser, 1999. 187 p. \$16.95. 0-8176-5807-6
- Schloeder, Steven J. *Architecture in communion : implementing the Second Vatican Council through liturgy and architecture*. San Francisco: Ignatius Press, 1998. 267 p. 0-89870-631-9
- Scoppolo, Francesco, ed. *Piano di intervento in preparazione del giubileo dell'anno 2000 : Roma e area metropolitana*. Rome: Fratelli Palombi, 1998. 200 p. L28.000. 88-7621-220-5
- Simpson, Pamela H. *Cheap, quick, & easy : imitative architectural materials, 1870-1930*. Knoxville: Univ. of Tennessee Press, 1999. 215 p. 1-57233-037-6
- Sinigalli, Rocco. *Una storia della scena prospettica dal Rinascimento al Barocco : Borromini a quattro dimensioni*. Florence: Cadmo, 1998. 166 p. (Perspicere; 1) L80.000. 88-7923-187-1
- Southall, Aidan William. *The city in time and space*. New York: Cambridge Univ. Press, 1998. 473 p. \$69.95. 0-521-46211-8
- Stadtansichten : Diener & Diener*. Zurich : ETH, 1998. 80 p. 3-85676-081-4
- Strategies for vocational training in architectural heritage skills : proceedings, symposium organized by the Council of Europe, International Heritage Fair, Le Carrousel du Louvre, Paris, 13 April 1996*. Strasbourg : Council of Europe Pub., 1998. 132 p. (Cultural heritage; no. 38) 92-871-3563-0
- Tavernor, Robert. *On Alberti and the art of building*. New Haven : Yale Univ. Press, 1998. 278 p. \$60.00. 0-300-07615-0
- Thomsen, Christian W. *Sensuous architecture : the art of erotic building*. New York : Prestel, 1998. 183 p. \$65.00-3-7913-1807-1
- Tom Kovac. Chichester: Academy Editions, 1998. 111 p. (Architectural monographs; 50) 0-471-97749-7
- Tomlan, Michael A., ed. *Preservation of what, for whom? : a critical look at historical significance*. Ithaca, N.Y.: National Council for Preservation Education (P.O. Box 291, Ithaca, N.Y. 14851), 1998. 234 p. \$29.00. 0-9662723-1-5
- Trulove, James Grayson and Il Kim, eds. *The new American cottage : innovations in small-scale residential architecture*. New York: Whitney Library of Design, 1999. 227 p. \$55.00. 0-8230-3169-1
- Turner, Paul V. *Frank Lloyd Wright's Hanna House restored*. Stanford, CA: Hanna House Board of Governors, 1999. 19 p.
- L'UIA, 1948-1998. Paris: Epure, 1998. 203 p. (Histoire d'architecture) F135. 2-907687-58-1
- Vetter, Cyril E. *The Louisiana houses of A. Hays Town*. Baton Rouge, LA: Louisiana State Univ. Press, 1999. 161 p. \$39.95. 0-8071-2371-4
- Von Gerkan, Marg und Partner : *architecture, 1995-1997*. Boston : Birkhäuser, 1998. 351 p. \$90.00. 0-8176-5844-0
- Warren, John. *Conservation of brick*. Oxford: Butterworth Heinemann, 1999. 294 p. (Butterworth-Heinemann series in conservation and museology) £65.00. 0-7506-5091-4
- Weinstock, Michael. *TS : artefacts and instruments*. London: Architectural Association, 1999. 75 p. (Themes; 8) £9.95. 1-870890-87-6
- Willey, Ann. *York Minster*. London: Scala Books, 1998. 96 p. £7.95. 1-85759-188-7
- Ziskin, Rochelle. *The Place Vendôme : architecture and social mobility in 18th century Paris*. New York : Cambridge Univ. Press, 1999. 224 p. \$75.00. 0-521-59259-3

## Grants and Fellowships (continued from page 10)

months of full-time work on projects that will make a significant contribution to the humanities. In most cases, faculty members of colleges and universities in the U.S. must be nominated by their institution for this competition. Individuals employed in non-teaching capacities in colleges and universities, and individuals not affiliated with colleges and universities do not require nomination and may apply directly to the program. Stipends are \$4,000 and the tenure must cover two full and uninterrupted months and will normally be held between May 1, 2000 and September 30, 2000. For additional information, tel. 202-606-8551; email: [stipends@neh.gov](mailto:stipends@neh.gov), or visit the website at <http://www.neh.gov>. *Deadline: October 1, 1999.*

**The American Antiquarian Society** offers several categories of short- and long-term research fellowships for 2000-2001. Funding is available from the National Endowment for the Humanities for four to 12 months' residence at the Society, while a grant from the Andrew W. Mellon Foundation funds other long-term fellowships. Other categories provide one to three months' support. Research Associate status (without stipend) will be available to qualified applicants. Through an arrangement with The Newberry Library, AAS encourages applications for joint short-term fellowship tenure in both Chicago and Worcester. In addition, a Mellon Post-Dissertation Fellowship, a full-year research award, supports revision of a dissertation for publication, with a topic relevant to the Society's library collections and programmatic scope. For detailed descriptions of available awards and applications, contact John B. Hench, Vice President for Academic and Public Programs, Room A, American Antiquarian Society, 185 Salisbury Street, Worcester, Massachusetts 01609-1634; tel. 508-755-5221; email: [cfs@mwa.org](mailto:cfs@mwa.org). *Deadline for the Mellon Post-Dissertation Fellowship: October 15, 1999. Deadline for all other AAS fellowships: January 15, 2000.*

**The National Humanities Center**, located in the Research Triangle Park of North Carolina, near Chapel Hill, Durham and Raleigh, offers 35 - 40 residential fellowships for advanced study in all fields of the humanities. Applicants must hold the Ph.D. or equivalent credentials and have a record of publication. The Center provides an environment for individual research and fosters the exchange of ideas among scholars. Senior and junior scholars are eligible, but the latter must be engaged in research well beyond the subject of their doctoral dissertations. Fellowships are for the academic year. Scholars from any nation may apply. Stipends range from \$35,000 to \$50,000; travel stipends are provided for fellows and their families to and from North Carolina. For additional information, contact the Center at email: [nhc@ga.unc.edu](mailto:nhc@ga.unc.edu), visit the website at <http://www.nhc.rtp.nc.us:8080>, or write to the postal address below. For application materials, contact the Fellowship Program, National Humanities Center, P.O. Box 12256, Research Triangle Park, North Carolina 27709-2256. *Deadline: October 15, 1999.*

**The Canadian Centre for Architecture** announces its 2000-2001 Visiting Scholars Program, established to encourage advanced research in architectural history

and thought. The Program is intended for scholars and architects conducting research at a post-doctoral or equivalent level. It seeks to encourage scholarly work that engages in a discussion on architecture as a cultural endeavor. Proposals are sought in the following areas of study: Architecture and the Critical Debate after 1945, and The Phenomenon of Paradigm Shifts in Architecture since Antiquity. Residency at the Centre may extend for periods of three to eight months, beginning in September, January, and May of each year. The CCA will provide a monthly stipend ranging from \$3,000 to \$5,000 Cdn., determined on the basis of the candidate's professional achievements and publication record. For information and application forms, contact the Study Centre, Canadian Centre for Architecture, 1920 rue Baile, Montreal, Quebec, Canada, H3H 2S6; tel. 514-939-7000; fax: 514-939-7020; email: [studyctr@cca.qc.ca](mailto:studyctr@cca.qc.ca). *Deadline: November 1, 1999.*

**Andrew W. Mellon Postdoctoral Fellowships in the Humanities** at Stanford University, 2000 - 2001 are awarded to highly promising scholar-teachers in the humanities. These non-faculty one-year positions carry departmental affiliation and limited teaching duties, and offer opportunities for scholarly work. Stipends are \$40,900 plus health insurance and are renewable for a second year. Applicants must have received a Ph.D. by September 1, 2000 and preferably since June 1993. For information and application materials, contact Mary Cahil, Coordinator, Mellon Postdoctoral Fellowships at email: [mcahill@leland.stanford.edu](mailto:mcahill@leland.stanford.edu) or visit the website at <http://www.levland.stanford.edu/dept/humsci/office/humanities/mellon.html>. *Deadline: November 13, 1999.*

**The John Carter Brown Library** will award approximately 25 short- and long-term Research Fellowships for 2000-2001. Short-term fellowships, many of which have thematic restrictions, are available for periods of two to four months, and carry a stipend of \$1,200 per month. They are open to researchers of all nationalities, to graduate students as well as postdoctoral and independent scholars. Long-term fellowships, primarily funded by the National Endowment for the Humanities (NEH) and the Andrew W. Mellon Foundation, are typically for five to nine months and carry a stipend of \$2,800 per month. They are restricted to scholars not in degree programs, and to U.S. citizens or those who have resided in the U.S. for three years immediately preceding the fellowship term. These are residential fellowships. For detailed information and application materials, contact: Director, John Carter Brown Library, Box 1894, Providence, RI 02912; tel. 401-863-2725; fax: 401-863-3477; email: [JCBL\\_Fellowships@brown.edu](mailto:JCBL_Fellowships@brown.edu), or visit the website at <http://www.JCBL.org>. *Deadline: January 15, 2000.*

**Center for Advanced Study in the Visual Arts**, the National Gallery of Art, announces The Starr Foundation Visiting Senior Research Fellowship Program for Scholars from East and South Asia. The fellowships include a period of two months at the Center for research in Washington libraries and collections, followed by an additional two months of travel to visit collections, libraries, and other institutions in the United States. Applications will be considered for study in the history, archaeology, theory, and criticism of art, architecture, and urbanism of any geographical area and of any period. These fellow-



ships for advanced study are open to scholars from East and South Asia who hold appropriate degrees in the field and/or possess an equivalent record of professional accomplishment. Knowledge of English is required. Two fellowships will be awarded annually. The stipend includes travel, research and housing expenses. For information and application forms, write to the Center for Advanced Study in the Visual Arts, National Gallery of Art, Washington, D.C. 20565; tel. 202-842-6482; fax: 202-842-6733; email: [advstudy@nga.gov](mailto:advstudy@nga.gov); or visit the website at <http://www.nga.gov/resources/casva.htm>. *Deadlines: September 21, 1999 for award period March 1, 2000 – August 31, 2000; and March 21, 2000 for award period September 1, 2000 – February 28, 2001.*

## CALLS FOR PAPERS

**Nederlands Kunsthistorisch Jaarboek/Netherlands Yearbook for History of Art (N.K.J.).** Volume 51 (2000) invites proposals for articles related to the theme "The Culture of Home in the Netherlands, ca. 1400-1800." Contributors are encouraged to take widely varied but historically specific approaches to the material and psychological culture of the urban or rural home in the Low Countries and its ramifications for early modern notions of privacy, family, sociability and identity. Space is offered for articles based on traditional art-historical methods and to submissions that exemplify other approaches to the study of Netherlandish art, including cultural, literary, and socio-economic history. Maximum length: 7500 words, excluding notes. Send abstracts to Dr. Jan L. de Jong, Dept. of History of Art and Architecture, Groningen University, P.O. Box 716, 9700 AS Groningen, The Netherlands; email: [J.L.DEJONG@let.rug.nl](mailto:J.L.DEJONG@let.rug.nl). *Deadline: September 1, 1999.*

**Travelling Concepts: Text, Subjectivity, Hybridity** is the theme of a conference organized by the Amsterdam School for Cultural Analysis (ASCA), scheduled for January 11-13, 2000 at the University of Amsterdam. The ASCA is concerned with the concepts of text, subjectivity and hybridity based on the work of Mieke Bal, Stanley Fish, Clifford Geertz, Martin Fuchs, Mark Freeman, Michel Foucault, Evelyn Fox Keller, Gayatri Spivak, Mikhail Bakhtin and Homi Bhabha, and invites submissions on how text, subjectivity and hybridity have traveled, as concepts, between disciplines, schools, historical periods and academic communities, and how these considerations may be brought to bear on case studies in cultural analysis. Those chosen will be asked to complete papers of 4,000 words. *Deadline: September 15, 1999.* Send proposals of 250 words or less to ASCA, Spuistraat 210, 1012 VT Amsterdam, The Netherlands; fax: 020-525-3052; email: [asca@hum.uva.nl](mailto:asca@hum.uva.nl).

**The Third National Conference on Women and Historic Preservation**, scheduled for May 19-21, 2000 at Mount Vernon College, Washington, DC, invites proposals for presentations on any aspect of women and historic preservation. Topics include, but are not limited to: rewriting the history of the preservation

movement; identifying places of historical significance; reinterpreting historic places; developing inclusive policies and practices; representing the past in museum settings; promoting K-12 teaching with public history resources; and sharing strategies for preserving and protecting historic resources. Proposals that address the intersections of gender, race, class, ethnicity, and sexuality in the context of historic preservation or which provide an international basis for comparison are particularly sought. Proposals should include name, affiliation, cv and contact information, title and abstract (400-word maximum) for each paper in a proposed session; and a list of places this work has been previously presented. Submit proposals for papers, panels, workshops, or other types of presentations to Gail Dubrow, Conference Chair, Conference on Women and Historic Preservation, Preservation Planning & Design Program, University of Washington, Box 355740, Seattle, Washington, USA 98195-5740. For additional information, contact the program chair by email: [womenpres@hotmail.com](mailto:womenpres@hotmail.com) or tel. 206-685-4170; or visit the conference website at <http://www.caup.washington.edu/Women-Pres>. *First deadline: August 1, 1999. Proposals will continue to be reviewed until September 30, 1999.*

**The Sixth Annual Conference of the Omohundro Institute for Early American History and Culture** will take place June 9-11, 2000, at the University of Toronto. Proposals for papers focusing on cultural aspects (art history, cultural or literary studies, or anthropology, for example) of Early America are particularly sought. Proposals for studies that cross the Canadian border are also encouraged. Individual submissions should include a one-page proposal and a one-page cv. Proposals for entire panels should be submitted in one packet by the designated organizer with a one-page proposal and one-page cv for each presenter. Proposals for round-tables or other formats for two-hour sessions will also be considered. Send 12 copies of each proposal to Professors Marc Egnal and Daniel H. Usner, Program Co-chairs, Sixth Annual OIEAHC Conference, c/o Professor Marc Egnal, Department of History, Vari Hall, York University, Toronto, Ontario M3J 1P3, Canada. Submissions by email or fax will not be accepted. For additional information, contact Professor Laura Murray, Program Committee, email: [lm19@post.queensu.ca](mailto:lm19@post.queensu.ca). *Deadline: September 17, 1999.*

**Fear and Its Representations in the Middle Ages and the Renaissance** is the theme of the Sixth Annual ACMRS Interdisciplinary Conference, scheduled for February 17-20, 2000 in Tempe, Arizona. The Center welcomes papers that explore any topic related to the study and teaching of the Middle Ages and Renaissance and especially those that focus on this year's theme of fear. Papers may address, for example, the role of fear of such things as torture, the exchange of hostages, public punishment, and dismemberment plays as a deterrent in secular matters; or they may investigate literal fear, such as fear of hell and damnation, fear of battle, fear of love and fear of losing love, or other relevant topics. Send two copies of session proposals or one-page abstracts, along with two

copies of your current cv and the AV request form (available at the website: <http://www.asu.edu/clas/acmrs>), to Robert E. Bjork, Director, Arizona Center for Medieval and Renaissance Studies, Arizona State University, Box 872301, Tempe, AZ 85287-2301; tel. 602-965-5900; fax: 602-965-1681; email: [acmrs@asu.edu](mailto:acmrs@asu.edu). *Deadline: October 1, 1999.*

**The Vernacular Architecture Forum** invites proposals for presentations at its 2000 Annual Meeting, scheduled for June 7-10, in Duluth, Minnesota. Papers may address any aspect of vernacular architecture in North America or elsewhere and should be primarily analytical rather than descriptive in content. Papers investigating the landscape and built environment of the Upper Midwest are especially welcome. Proposals may be for either a 20-minute paper on a topic extensively researched or a 10-minute work-in-progress report. One-time fellowship awards may be available to student presenters. Presentations at the meeting will be considered for publication in the VAF's *Perspectives in Vernacular Architecture* series. Presenters must be VAF members at the time of the conference. By mail or fax, send a one-page abstract (400 words maximum) with title, author's name, address, telephone, fax and email information, and a brief cv to Carolyn Torma, American Planning Association, 122 S. Michigan Ave., Suite 1600, Chicago, IL 60603; tel. 312-786-6386; fax: 312-431-9985; email: [ctorma@planning.org](mailto:ctorma@planning.org). For information about the annual meeting, contact Michael Koop, Minnesota Historical Society, 345 Kellogg Boulevard West, St. Paul, MN 55102; tel. 651-296-5451; email: [michael.koop@mnhs.org](mailto:michael.koop@mnhs.org) or visit the VAF website at <http://www.vernaculararchitecture.org>. *Deadline: October 1, 1999.*

**European Cities: Networks and Crossroads** is the theme of the Fifth International Conference on Urban History, scheduled for August 30-September 2, 2000 in Berlin, Germany. Papers are sought for the main session titled "Urban Living in Modern Cities: Educational Ideas and Practices, Public and Private Strategies (1850-1960)." Papers of this session will be grouped around three themes: the social consequences of technology and scientific innovation in an urban context; the educational and planning process which tried to create new norms of modern urban living and popular responses of different social groups which mostly ranged somewhere between adaptation, appropriation and rejection. Send abstracts and inquiries to Adelheid v.Saldern, Historisches Seminar, Universität Hannover Im Moore 21, 30167 Hannover, Germany; tel. 49-511-762-4430 or 49-511-762-3887; fax: 49-511-762-44-79; email: [asalder@gwdg.de](mailto:asalder@gwdg.de) or to Helen Meller, Department of History, School of History and Art History, University of Nottingham, Nottingham NG7 2RD UK; tel. 44-115-951-4537; fax: 44-115-951-4525; email: [helen.meller@nottingham.ac.uk](mailto:helen.meller@nottingham.ac.uk). For more information, visit the website at <http://eauh2000.tu-berlin.de>. *Deadline: October 1, 1999.*

**The Interdisciplinary Nineteenth-Century Studies (INCS)** announces its Fifteenth Annual Conference, to be held at the Yale Center for British Art, Yale University, New Haven, Connecticut on April 6-8, 2000. Proposals are invited for papers and panels on the general topic of "Centers and Peripheries." This conference focuses on the interdisciplinary issues of how both ideologies and material practices construct, maintain, and challenge centers and peripheral spaces in geographic, political, and psychological terms. Possible themes for papers include, but are not limited to Colonial Spaces; Maps and inventions; Street culture; Paris and London; Architecture and Class; Cities, Suburbia, Exurbia; Representations of Empire; and Gender and Power. Longer versions of INCS conference papers are regularly published in the affiliated journal, *Nineteenth-Century Contexts: An Interdisciplinary Journal*. Send abstracts of 200-400 words, or inquiries for more information to Mark Schoenfeld, INCS President, Dept. of English, Vanderbilt University, Nashville, TN 37235; email: [incs@vanderbilt.edu](mailto:incs@vanderbilt.edu). For more information, including details about special sessions, see the website at <http://www.vanderbilt.edu/incs>. *Deadline: October 16, 1999.*

**Ways of Seeing: The Nineteenth Century**, an interdisciplinary conference sponsored by the Interdisciplinary Nineteenth-Century Studies and the University of Paris-X, Nanterre, is scheduled for June 22-24, 2000 at the University of Paris-X, Nanterre, France. Discussions and papers will be conducted in English. Send abstracts of 200-400 words or complete papers to Therese Dolan, Department of Art History, Temple University, 8th Floor, Ritter Annex, Philadelphia, PA 19122; email: [tdolan@astro.temple.edu](mailto:tdolan@astro.temple.edu). For more information, see the website at <http://www.vanderbilt.edu/incs>. *Deadline: December 1, 1999.*

**Social Reception of Baroque Gardens** is the topic of the Studies in Landscape Architecture at Dumbarton Oaks 2001 Symposium, scheduled for May 18 - 19, 2001. The conference will examine relationships between changes in garden design and the uses and social reception of gardens created in order to inspire social deference, win the admiration of subjects for the garden's patron in a hierarchical society, and foster a willingness to satisfy the patron's expectations. The Baroque Age in Europe provides a wealth of examples, but the social reception of gardens can be studied within other historical contexts, including the European Renaissance; late Colonial, Revolutionary, Modern or Postmodern America; and many other cultures. Papers may derive from a wide range of sources, including diaries and novels, plays or paintings, and may address any period of history up to the present. Send eight copies of an abstract of three pages or less describing scope and content of the paper and its significance to the symposium theme to Michel Conan, Director of Studies in Landscape Architecture, Dumbarton Oaks, 1703 32<sup>nd</sup> St. NW, Washington, DC 20007; tel. 202-339-6460; fax: 202-625-0432; email: [landscape@doaks.org](mailto:landscape@doaks.org). *Deadline: November 1, 1999.*

## CONFERENCES

**Interpreting Aalto: Baker House and MIT** is the title of a conference scheduled for October 1-2, 1999, at Kresge Auditorium, Massachusetts Institute of Technology. Tours of Baker House will be conducted on October 3. The conference celebrates the building's 50th birthday, and the completion of its restoration as an undergraduate student residence. The conference focuses on topics including the work of the distinguished Finnish architect Alvar Aalto and debate over the preservation of modern architecture. For additional information, or to register for the conference, contact Aalto Conference, Conference Services Office, Room 7-III, MIT, 77 Massachusetts Avenue, Cambridge, MA 02139-4307; tel. 617-253-1700; fax: 617-258-7005; email: [conf-serv-www@MIT.edu](mailto:conf-serv-www@MIT.edu); or visit the conference website at <http://architecture.mit.edu/events/aac>.

**Uniting the Useful with the Beautiful: The Ideas that Formed the Arts and Crafts Movement** is a conference of internationally-acclaimed scholars and experts, scheduled for October 28 - 31, 1999 in Perry, Iowa. The conference will include a day's tour to Mason City to visit several Prairie School structures. It is sponsored by the Hotel Pattee in collaboration with the Heartland Heritage Center. For more information, tel. (toll free) 877-797-6886; fax: 515-283-8303, or visit the website at <http://www.hotelpattee.com/conferences>.

**From the Cape Cod House to the Shingle Style Summer Cottage** is the theme of a study weekend and tour in Boston, MA and the surrounding areas, scheduled for October 29 - 31, 1999, hosted by the Victorian Society in America's New England Chapter. Guided motor tours will include the King Caesar Home, Marion Arts Center, Quincy Adams, National Historic Site, Captain Robert Bennet Forbes House, and the Suffolk Resolves House. A walking tour of Sippican Village will feature Queen Anne, Shingle Style, and Colonial Revival residences by H.H. Richardson, William Gibbons Preston, James Kelly, and others. For more information, contact the Victorian Society in America, 219 S. 6th Street, Philadelphia, PA 19106; tel. 215-627-4252; fax: 215-627-7221; email: [vicso@libertynet.org](mailto:vicso@libertynet.org).

**The 1999 Feminist Art and Art History Conference** will take place October 30, 1999 at Barnard College, New York City. This conference explores artistic and art historical engagement with feminism broadly defined, including artistic practice, visual culture, theory, history, sexuality, gossip, anecdote, and pedagogy. Papers, slide presentations, or collaborative projects by artists, critics, art historians and others will be presented. For more information, contact Laura Aurichio, Loretta Lorange, and Maria Ruvoldt, c/o Department of Women's Studies, Barnard College, 3009 Broadway, New York, NY 10027-6598, or email Loretta Lorange at [Lorlorance@aol.com](mailto:Lorlorance@aol.com).

**Frank Lloyd Wright in the Valley of the Sun** is the theme of the Frank Lloyd Wright Building Conservancy Annual Conference, scheduled for November 10-14, 1999 at the SunBurst Resort, Scottsdale, Arizona. The conference features lectures and tours at Taliesin West, regional tours, social events and a viewing of the film "Frank Lloyd Wright in Japan." For information, contact the Frank Lloyd Wright Building Conservancy, 4657-B North Ravenswood Avenue, Chicago, IL 60640-4509; fax: 773-784-7862; email: [preservation@savewright.org](mailto:preservation@savewright.org); or visit the website at <http://www.savewright.org/FLW>.

## EXHIBITIONS

**Philippe Starck: Furniture & Objects** is a collection of signature works by the influential contemporary designer, dating from 1989 to the present. A major feature of this exhibition is a collection of Starck's chairs, which range from a biomorphic turquoise stool to a formal, cushioned chair. The installation is designed by Philip Johnson, and the exhibition is presented in collaboration with The Museum of Modern Art. P.S.1 Contemporary Art Center, Long Island City, New York. For information, tel. 718-784-2084. *Through August 29, 1999.*

**El Lissitzky: Beyond the Abstract Cabinet, 1930 - 1941** focuses on Lissitzky's collaborations with photographers and filmmakers, with an exhibition of lesser-known multimedia works. Museu d'Art Contemporani de Barcelona, Plaça dels Àngels, Barcelona. *Through September 5, 1999.*

**The American Century: Art and Culture, 1900-2000** is a mammoth retrospective of the 20th century, examining changes in American culture through the lens of art. Whitney Museum of American Art, New York. For information, tel. 212-570-3676. *Through August 30, 1999.*

**Continuing the Legacy: the 1998 GSA Design Awards** uses models, drawings and photographs to document 23 outstanding public projects completed within the past five years, including designs for future buildings, sculpture and stained glass, engineering, landscape and urban planning proposals and graphics. Since 1949 the U.S. General Services Administration (GSA) has been responsible for the design and construction of new civilian federal facilities and the preservation and renovation of existing government buildings. Through its Design Excellence Program, established in 1993, the GSA has engaged prominent designers and engineers to create public facilities, as well as art and designed objects. National Building Museum, Washington, DC. For information, tel. 202-272-2448 or visit the website at <http://www.nbm.org>. *Through September 5, 1999.*

**Where Do We Go From Here? Smart Growth and Choices for Change** is the first in a four-part exhibition series examining alternatives to current patterns of development. Cosponsored by the Urban Land Institute, the exhibition provides an overview of the causes of sprawl and the ways smart growth can

accommodate development as it preserves community character, protects the environment and encourages stable local economies. The next three exhibitions in the series will focus on suburban development, urban living and existing communities. National Building Museum, Washington, DC. For information, tel. 202-272-2448 or visit the website at <http://www.nbm.org>. *Through September 7, 1999.*

**32 Italian Photographers: A Tribute to Phyllis Lambert** honors the CCA's founder and her commitment to photography as an important medium for presenting architecture, with an exhibition of the work of a group of photographers who interpret the built environment. Canadian Centre for Architecture, Montréal, Canada. For information, tel. 514-939-7000. *Through September 26, 1999.*

**Heinz Hossdorf** is an exhibition featuring this building engineer's innovative work from 1949 until his retirement in 1980. Hossdorf is known for his work in concrete, steel and synthetic materials, and his testing techniques which included computer modeling. Museum für Ingenieurbauplastik, Ennenda, Switzerland. For information, tel. 055-646-64-20 or 055-640-59-56. *Through October 2, 1999.*

**Merchant Prince and Master Builder: Edgar J. Kaufmann and Frank Lloyd Wright** explores this architect-client relationship, which produced Fallingwater and more than a dozen other projects by Wright. The exhibition is divided into three sections: "The Kaufmanns and Good Design," "Fallingwater and the Projects for Bear Run," and "Projects for Pittsburgh." Materials exhibited range from preliminary sketches, annotated construction details, and presentation sheets to publications, photographs, and a model of Fallingwater built for the exhibition. A lecture series running from May through October and a catalogue accompany the exhibition. The exhibition is organized by the Heinz Architectural Center in cooperation with the Frank Lloyd Wright Foundation, Scottsdale, Arizona. The Heinz Architectural Center at Carnegie Museum of Art, Pittsburgh. For information about the exhibition, lecture series or catalogue, tel. 412-622-3131. *Through October 3, 1999.*

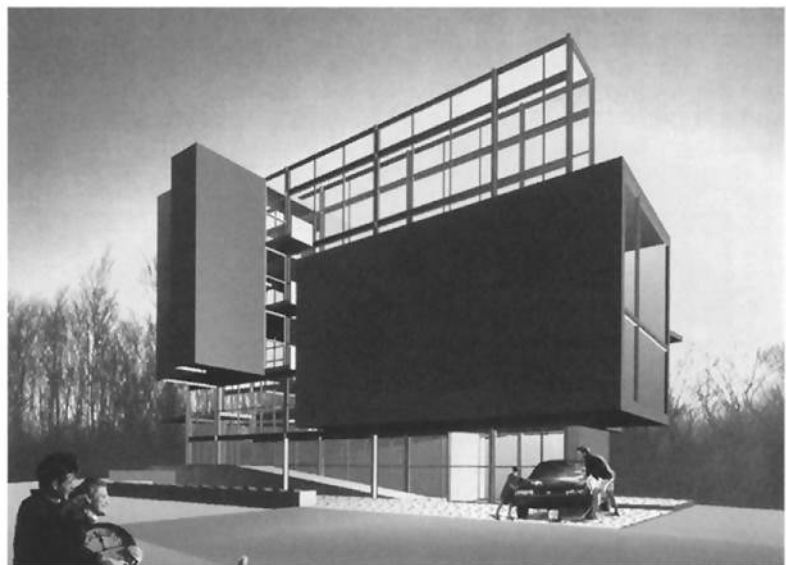
**The Un-Private House** examines 26 recent homes by a roster of international architects whose designs reflect the transformation of the private house in response to changing cultural conditions and recent architectural innovations. Among the social phenomena examined are changing demographic patterns, shifting definitions of privacy in light of the proliferation of various types of media, and new concepts of work and leisure. The exhibition includes some 25 models, along with computer-generated and digitally-enhanced photographs and drawings, and interactive digital displays developed jointly with MIT Media Lab that allow visitors to take a virtual tour of several of the projects. A catalogue accompanies the exhibition. The Museum of Modern Art, New York. For information, tel. 212-708-

9400 or visit the website at <http://www.moma.org>. *Through October 5, 1999.*

**The Coincidence of Opposing Extremities** uses photographs and essays to investigate the relationships linking Central European Baroque ecclesiastical architecture and mathematics. The exhibit catalogue includes contributions by Karsten Harries and Werner Müller. Massachusetts Institute of Technology, Rotch Library. For information or a listing of subsequent venues, contact the Center for Ecumenical Research in the Arts and Sciences, 2708 Amboy Road, Staten Island, NY 10306-2140. tel. 718-667-8106. *August 16 - October 15, 1999.*

**Frank Lloyd Wright & Colleagues: Indiana Works** showcases the eight Wright houses in Indiana, plus five projects designed by Wright for Indiana, but never built. The exhibition includes over 150 items, including photographs and correspondence, original furniture, stained glass, and other artifacts from Wright buildings and homes. A special feature is an interactive model of a home studio designed by Wright for an artist in Columbus, Indiana. The John G. Blank Center for the Arts, Michigan City, Indiana. For information, tel. 219-874-4900 or (toll free) 877-FLW-1999. *Through October 24, 1999.*

**Carlo Scarpa, Architect: Intervening with History** is the first full-scale exhibition in North America to reassess the Venetian architect and designer. The exhibition addresses Scarpa's distinctive approach to contending with the layers of history that mark the fabric of a city and a building, and features 150 of the architect's drawings, new photographs commissioned by the CCA from the Italian photographer Guido Guidi, and four specially fabricated study models. A catalogue and lecture series accompanies the exhibition. This exhibition coincides with an exhibition of art glass designed by Scarpa, on view at the Museum of Decorative Arts of Montréal (through



*The Digital House Project (Hariri & Hariri, 1998) is one of 26 recent homes designed by a group of international architects and featured in the exhibition "The Un-Private House" at The Museum of Modern Art. See the listing to the left.*

September 11, 1999). The Canadian Centre for Architecture, Montréal, Canada. For information, tel. 514-939-7000. *Through October 31, 1999.*

**A Voyage of Discovery: The Nile Journal of Richard Morris Hunt** traces the trip that architect Hunt made up the Nile in 1853, featuring rare photographs and photographic equipment, original sketches and watercolors, and period maps. Much of the material in the exhibition is drawn directly from the Octagon's own Prints & Drawings Collection, which contains over 15,000 of Hunt's original drawings and records, and dozens of sketchbooks and scrapbooks. The Octagon, The Museum of the American Architectural Foundation, Washington, DC. For information, tel. 202-638-3221. *Through January 2, 2000.*

**Stay Cool! Air Conditioning America** explores the transformative power of air conditioning through photo murals, artifacts, television commercials and advertisements, air-conditioning equipment and interactive displays. National Building Museum, Washington, DC. For information, tel. 202-272-2448 or visit the website at <http://www.nbm.org>. *Through January 2, 2000.*

## ELECTRONIC NEWS

<http://www.csa.brynmawr.edu/bmerr.html> is the location of the *Bryn Mawr Electronic Resources Review (BMERR)*, an electronic journal for reviews of electronic resources related to antiquity. Antiquity is here broadly defined, but the focus is on the classical world. By electronic resources, we mean websites and CD-ROMS, at least until a new medium replaces one or both. Subscribers may receive either the entire review via email (bmerra-l) or just notice of its website posting (bmerrb-l). To subscribe, email majordomo@brynmawr.edu with "subscribe bmerra-l: or "subscribe bmerrb-l" in the message area. No subject is necessary. Reviews may also be accessed directly by visiting the website. Direct questions or comments to the editor, Harrison Eiteljorg II, at neiteljo@brynmawr.edu.

<http://www.dlib.org> is the location of *D-Lib Magazine*, the magazine of digital library research. The March 1999 issue (vol. 5, no. 3) includes a summary of the accomplishments of the Getty Information Institute by its former director, Eleanor E. Fink. Included are descriptions of projects, initiatives and partnerships, such as the Bibliography of the History of Art, Art and Architecture Thesaurus and the Getty Thesaurus of Geographic Names.

<http://www.jkl.fi/kulttuur/aalto/index.htm> is the address of the Aalto Museum website, which features a complete list of architect Alvar Aalto's buildings in Finland, including detailed information on their locations and accessibility.

The following websites contain information and images related to the classical world and its built landscape: the Classics and Mediterranean Archaeology Home Page at <http://rome.classics.lsa.umich.edu/welcome.html>; the Perseus Project at <http://www.perseus.tufts.edu/>; the Hellenic Ministry of Culture at <http://www.culture.gr>; the Ancient City of Athens at <http://www.indiana.edu/~kglowack/Athens/Athens.html>; and Diotima-Women & Gender in the Ancient World at <http://www.uky.edu/ArtsSciences/Classics/gender.html>.

<http://whitney.artmuseum.net/tac.html> is the location of the online version of the Whitney Museum's exhibition, "The American Century." (See listing on page 16.)

<http://www.modcult.brown.edu/people/Scholes/modlist/Title.html> is the address of the Index of Web Sites on Modernism.

## NEWS FROM

The Cooper-Hewitt, National Design Museum, Smithsonian Institution, in New York City, will be closed September 5–October 11 for installation of "The Work of Charles and Ray Eames: A Legacy of Invention," which will be on view October 12, 1999 through January 9, 2000.

The American Council of Learned Societies (ACLS) announced that it will receive \$3 million from The Andrew W. Mellon Foundation to assist scholars to collaborate with university presses in the electronic publishing of monographs in history. The ACLS will establish a consortium of learned societies and university presses to initiate the program of publishing these electronic monographs. This new program will over five years publish and market 85 new electronic books and convert 500 influential backlist titles, along with reviews of those books, to digital form. The seven university presses joining in this effort are: Columbia University Press, Harvard University Press, Johns Hopkins University Press, New York University Press, Oxford University Press, Rutgers University Press, and the University of Michigan Press. NYU Press, as publishing coordinator, will provide a home for the project's administrative office. A major aim of the project is promoting greater acceptance of the electronic book as a valid form of scholarly publication by selecting works of the highest quality for this new form of publication. Initially, the ACLS, the societies and presses will seek to identify, recruit, and solicit proposals from well-established scholars.

*Cuartilla Informativa* is a monthly bilingual newsletter about the restoration efforts in Old Havana and generally in Cuba. It includes articles provided by Cuban individuals involved in restoration, excerpts from the Cuban press, and information concerning professional events and courses offered in Cuba, as well as notices of videos produced detailing restoration projects and architectural highlights of Havana and other



Cuban cities. For a free subscription, contact Manolo Sanchez, Editor, 68-63 108th St., #4C, Forest Hills, NY 11375-2924; tel./fax: 718-263-6640; or email: CUARTILLA@aol.com.


The National Endowment for the Humanities has a new monthly email newsletter, *NEH Outlook*. It brings readers the latest news about NEH grant programs and activities. To subscribe, send an email to newsletter@neh.gov and type the word "subscribe" in the body of the email message. Direct questions and comments about the newsletter to email: outlook@neh.gov.

The Israel Museum, Jerusalem, has released the design for its new 130,000 square-foot entrance pavilion and visitor service center, designed by James Freed of Pei Cobb Freed & Partners, New York. The Israel Museum houses encyclopedic collections ranging from pre-history to contemporary art, including the most extensive holdings of Biblical and Holy Land archaeology in the world, among them the Dead Sea Scrolls. For additional information, contact the museum at tel. 02-6708811; fax: 972-2-5631833.

The University of Maine has announced the acquisition of the professional papers of Ellen Louise Payson (1894 - 1977), a prominent landscape architect in the 1920s and 1930s. Payson, a native of Maine, developed a national reputation, and her papers include over 500 drawings, blueprints and photographs. The collection will be housed in the Special Collections section of the university's Raymond H. Folger Library, and will be available to the general public for research purposes. For additional information, tel. 207-581-3743.

## INQUIRY

Seeking biographical information, especially about the architectural training, of two New York architects: Kenneth How, who had an office from 1909 - 1913 and was the partner of William A. Bates from 1912 - 1931; and Douglas Fitch who had a New York office from 1909 - 1936, and was the partner of Oswald Hering from 1912 - 1921. Send information to Mary Peale Schofield, 44 Sycamore Rd., Princeton, NJ 08540.



**DESIGN A SHORT TRIP  
AROUND SOME BIG PLANS**

Come see Frank Lloyd Wright's plans for Pittsburgh, Fallingwater, and other Kaufmann haunts. April 10 through October 3, 1999, in the Heinz Architectural Center. Ample on-site parking. For more information about this exhibition, museum hours, and directions, call 412-622-3131 or visit [www.cmoa.org](http://www.cmoa.org).

Merchant Prince and Master Builder  
Edgar J. Kaufmann and Frank Lloyd Wright

**CARNEGIE  
MUSEUM  
OF ART  
PITTSBURGH, PA**

SPONSORED BY KAUFMANN'S, A DIVISION OF THE MAY DEPARTMENT STORES COMPANY

©The Frank Lloyd Wright Foundation 1999

## CLASSIFIED

### Getty Research Grants 2000

#### Residential Grants at the Getty Center

The Getty Research Institute provides support for scholars at the senior, postdoctoral, and predoctoral levels to undertake research while in residence at the Getty Center in Los Angeles. Each scholar year is organized around a specific theme that research projects must address. The theme for the 2000 - 2001 academic year is "Reproductions and Originals." The residential grant categories include: Getty Scholars - nine-month fellowships for senior scholars; Postdoctoral Fellows-two-year fellowships for scholars whose doctoral degrees have been conferred within the last six years; Predocctoral Fellows-two-year fellowships for doctoral candidates who have completed their qualifying examinations; and Visiting Scholars-one- to three-month fellowships for senior scholars pursuing independent research. The Research Institute also offers Library Research Grants that provide short-term support to scholars at all levels to pursue independent projects that will benefit from research in the collections housed in the Getty library. Additional information is available from the Getty Research Institute, 1200 Getty Center Drive, Suite 1100, Los Angeles, CA 90049-1688, U.S.A., 310 440.7392 (phone), 310 440.7782 (fax), residentialgrants@getty.edu (E-mail), and online at <http://www.getty.edu/grant/research2000>.

### Nonresidential Grants

The Getty Grant Program provides support to scholars at the senior, midcareer, and postdoctoral levels to pursue interpretive projects on topics that will advance the understanding of art and its history. Although grantees are welcome to use the Getty library if their projects bring them to Los Angeles, fellowships are nonresidential. Grant recipients pursue their research wherever necessary to complete their projects. Collaborative Research Grants provide opportunities for teams of scholars to collaborate on interpretive research projects, including the research and planning of scholarly exhibitions. Postdoctoral Fellowships provide scholars whose doctoral degrees have been conferred within the last six years with twelve-month periods of support to pursue interpretive research projects. Curatorial Research Fellowships provide from one to three months of support for curators to undertake independent research or study projects. Projects that advance the professional scholarly development of curators are especially encouraged. Additional information is available from the Getty Grant Program, 1200 Getty Center Drive, Suite 800, Los Angeles, CA 90049-1685, U.S.A., 310 440.7320 (phone), 310 440.7703 (fax), researchgrants@getty.edu (E-mail), and online at <http://www.getty.edu/grant/research2000>.

#### Deadline for all Getty Research Grants: November 1, 1999

(Additional deadlines for Library Research Grants only: January 15, 2000 and June 15, 2000)

### Society of Architectural Historians

1365 North Astor Street  
Chicago, IL 60610-2144

Non-Profit Org.  
U. S. Postage  
PAID  
Kansas City, Mo.  
Permit No. 4085

August 1999

Vol. XLIII No. 4



The *Newsletter* is published every even month by the Society of Architectural Historians (phone: 312-573-1365). Deadline for submission of material is six weeks prior to publication.

Send editorial correspondence and submissions for publication to: Roberta M. Moudry, 140 Sibley Hall, Department of Architecture, College of Architecture, Art and Planning, Cornell University, Ithaca, NY 14853-6701, tel. 607-255-3917; fax: 607-255-0291; email: rmm5@cornell.edu. Material on disk or email is preferable: all formats acceptable. Send correspondence and submissions for Preservation Forum to Alison K. Hoagland, Dept. of Social Sciences, Michigan Technological University, 1400 Townsend Drive, Houghton, MI 49931-1295; tel. 906-487-2113; fax: 906-487-2468; email: hoagland@mtu.edu.

Editor: Roberta M. Moudry  
Book List Editor: Judith Holliday  
Preservation Forum Editor: Alison K. Hoagland

#### SAH Officers

President: Richard Longstreth, 202-994-6098  
1st V.P.: Christopher Mead, 505-277-2767  
2nd V.P.: Diane Favro 310-825-5374  
Secretary: Dennis McFadden, 412-622-5554  
Treasurer: John C. Blew, 312-807-4317

Executive Director: Pauline Saliga, 312-573-1365

SAH email: [info@sah.org](mailto:info@sah.org) and  
[membership@sah.org](mailto:membership@sah.org).  
SAH Website <http://www.sah.org>

Copyright © 1999, The Society of Architectural Historians. All rights reserved.