



# the Newsletter

of The Society of Architectural Historians

October 1994 Vol. XXXVIII No. 5

## 1994 SUMMER TOUR

In the Middle Ages, the trip to Santiago de Compostela in northern Spain was one of the three great international pilgrimages that Christians could undertake, as worthwhile as those to Jerusalem and Rome. On June 20, 1994, the feast day of SS. Osana of Mantua, Adalbert of Magdeburg, Edward the Martyr, King of England, and one of the various SS. Govan, a group of 40 Society of Architectural Historian pilgrims set off from the Tour St-Jacques in Paris (the traditional assembly point for pilgrims) on this year's Foreign Tour. They were headed for Santiago, (in the words of long-time SAH member and faithful tour participant Kenneth LaBudde, who wrote the report on which this article is based) "that Galician place where legends have the deposition of the body of St. James."

Traveling in style, in a dark red bus piloted by a driver soon nicknamed "Jean-sans-peur," the group spent 15 days traveling along segments of the four pilgrimage routes in France. Crossing the Pyrenees at historic Roncesvalles, where the defeat of Charlemagne's army gave rise to the legend of Roland, the SAH pilgrims completed their journey along the traditional *camino frances* to Santiago de Compostela.



*Pallazas, the ancient stone housebarns, through the mist at El Cebreiro (Lugo). All photos by Kenneth LaBudde.*

The tour was led by medievalist Annie Shaver-Crandell, of the City College of New York, SAH Executive Director Susan Foster Kromholz, and former SAH president Franklin Toker, who originated the idea of the tour. Tour participants included architectural historians, librarians, and medievalists, as well as a herbalist, a pharmacist, a pathologist, a priest, and a poet. Along the way, all were called upon to share their knowledge with the group, resulting in an extraordinarily high *esprit de corps*.

On the road to Santiago, the pilgrims visited many

famous Romanesque and Gothic monuments. From Notre Dame de Paris to the Cathedral of St. James in Santiago de Compostela, the SAH travellers visited and photographed old favorites like the Abbey Church of La Madeleine at Vézelay, the Cathedral of St-Etienne at Bourges, the Abbey of St-Pierre at Moissac, the Basilica of St-Sernin at Toulouse, and the cathedrals at Burgos and León.

LaBudde describes Vézelay as "Viollet-le-Duc's early and masterful restoration." And, in fact, the issue of restoration and renovation was a major focus of interest among tour participants. In some instances, the medieval was difficult to find beneath the later accretions. But at



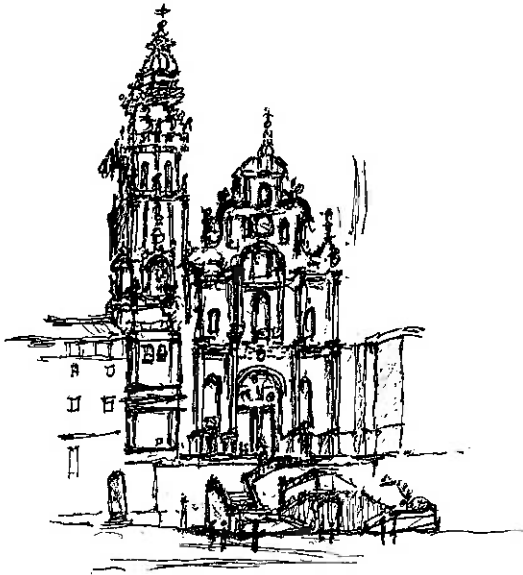
*Lighting the great censer in the Cathedral of Saint James in Santiago de Compostela.*

many locations, as LaBudde said in reference to the cathedral at Bourges, the pilgrims experienced "a moment for being grateful that wars of religion, of revolution, and of nations, had not destroyed its splendid windows." From the cloister and portal sculpture at Moissac ("one of the artistic wonders of the medieval period") to the lantern of the cathedral at Burgos with its "valentine of lacy stone," the tour participants visited many splendid examples of intact architecture.

As is typical of SAH tours, the pilgrims visited many less-well-known sites — towns such as Auch in France ("a Basque city often missed on tours," comments LaBudde) and Estella in Spain. For some pilgrims, the high point of the trip was Le Puy, with its churches perched atop volcanic cone-shaped hills. The hardy among them climbed the 268 steps to visit the

Romanesque chapel of St-Michel. For other tour members, the most memorable visit was to Conques, with its extraordinary Romanesque church of Ste-Foy. After a night spent in delightful local inns, tour members attended early morning prayers, sung in three-part polyphony by monks wearing habits and running shoes. Others missed breakfast to participate in morning mass in the austere beauty of this great pilgrimage church. For some SAH pilgrims, the visit to the gold statue of Ste-Foy at Conques was a highlight of the trip. As LaBudde observed, "the treasury at Conques [has] the most sophisticated display facility of any museum installation" seen on the tour.

Many pilgrims were captivated by the lovely and lonely octagonal church in Eunat, surrounded by fields of ripe grain. The visit there gave rise to an interesting discussion on the bus about the Palestinian origins of



Sketch of the Cathedral of St. James in Santiago de Compostela by Peter Archer.

octagonal church design. Others enjoyed the visit to Santo Domingo de la Calzada, where St. James saved an innocent young man from hanging by holding him in the air all day long. The cathedral houses two white chickens in memory of the miracle. As one tour member remarked, "I've come 5,000 miles to see those chickens!"

For those with an interest in more modern architecture, the Bishop's Palace in Astorga, designed by Antonio Gaudi, was a real delight. With its stylistic quotations from Mackintosh and Dürer, and its eccentric use of gold leaf, it could, as LaBudde says, "serve as a pattern-book for Disneyland."

And those who find the vernacular exciting were thrilled by the bus ride over the back of the Pyrenees, through the village of Foncebadon (population two humans and six dogs), to the Refugio San Gaucelmo, a hostel in an almost deserted mountain village. Maintained largely by the British Confraternity of St. James, its beds are reserved for those who walk or cycle the pilgrimage road. A second day of hair-raising mountain driving included a stop at the fiercely romantic (and foggy) El Cebrero where "the ancient Celtic stone housebarns" have been preserved as an ethnographic museum.

Although the pilgrimage had been carefully mapped out in advance, there were some delightful surprises. The tour arrived in Burgos and Leon as these cities were celebrating the saints' days of patron SS. Peter and Paul. In both cities, the evening streets were full of musicians ("costumed groups dancing as drums rolled and pipes piped") and fireworks. In Burgos, the cathedral was packed for morning mass with bishops, "military in uniform, officials in Sunday best, marchers in folk costume, musicians, and gigantes towering over them all."

In Clermont-Ferrand and Le Puy, local experts provided insights into local research and preservation issues. In Aire-sur-l'Adour, the curé of the church of Ste-Quitterie interrupted his Sunday dinner to explain the recently uncovered Romanesque blind arcade (which disappeared in the 18th century during a "remodeling" of the altar).

The tour ended in the great Galician city of Santiago de Compostela, where the SAH pilgrims bought scallop shells, the traditional emblem of the pilgrimage of St. James. The tour leaders awarded certificates of completion to all participants, certifying that they had, indeed, reached their goal. Most of the pilgrims "gathered for the mass at midday in the cathedral, to witness at its conclusion the lighting of the great censer." Watching this "exclamation point of the tour" as it swung overhead, practically reaching the cathedral's vaults, it was easy to understand the significance of the pilgrimage to medieval Christians.

Looking back, then, at "green Auvergne and sun-baked Spanish towns," LaBudde muses on "the differences between what was built in what is now Spain and . . . what is now France, to shelter the pilgrim and to give glory to God." "Perhaps," he writes, the tour best illustrated "something of a mystic bent of mind, a constant of human existence (to paraphrase William Melczer), but which was more explicitly part of the medieval world."

## 1995 SAH PRAIRIE TOUR

The Prairie Tour has been rescheduled and will now take place from Wednesday, September 27 through Sunday, October 1, 1995. This change was made to accommodate spending the night at the Gainey Conference Center near Owatonna, Minnesota.

## THE GETTY CENTER FOR THE HISTORY OF ART AND THE HUMANITIES

The Getty Center for the History of Art and the Humanities announces its annual residential fellowship program. The 1995-1996 Center Fellowship committee will consider applicants whose research examines the theme of the scholar year—the nature and idea of collecting. A limited number of fellowships is offered to students who will complete their doctoral dissertations within one year, or those who have received their doctorates within the past three years. The application deadline is December 1, 1994.

The Getty Center is an advanced research institution designed to bring together scholars from around the world to reexamine the meaning of art and artifacts within past and present cultures and to reassess their importance within the full scope of the humanities and social sciences.

For more information, please write:  
Center Fellowships

The Getty Center for the History of Art and the Humanities  
401 Wilshire Blvd., Suite 700, Santa Monica, CA 90401-1455

## SUMMER PROGRAMS

The American School of Classical Studies at Athens announces its Summer Sessions for 1995. The two six-week sessions are designed for those who wish to become acquainted with Greece and its antiquities in a limited time and to improve their understanding of the relationship between the country (its monuments, landscape, and climate) and its history, literature, and culture.

Each session is divided almost equally between the study of sites, monuments, and museums in Attica, and trips to places in Central Greece, the Peloponnese, Macedonia, Northwest Greece, and the islands. Participants are required to deliver oral reports on assigned topics, usually presented at the different sites appropriate to the reports.

The Summer Sessions are limited to 20 students each and are open to graduate and advanced undergraduate students, high school and college teachers.

Fees for the 1995 program are \$2,500. This includes tuition, room for the entire six-week period, partial board in Athens, domestic travel within Greece, and museum and site fees. International air fare, some meals, and incidental expenses are the participant's responsibility. A limited number of scholarships are available through the school and are awarded on the basis of answers to questions on the application.

Applications require transcripts and letters of recommendation. Kits including the application and scholarship information are available and may be requested from the Committee on the Summer Session, American School of Classical Studies in Athens, 993 Lenox Drive, Suite 101, Lawrenceville, NJ 08648. The application deadline for the 1995 Summer Session is February 15, 1995.

## EXHIBITIONS

The National Building Museum in Washington, D.C., was created by Congress to commemorate American achievements in architecture, design, and engineering and to encourage excellence in the building arts. This goal is achieved through the presentation of innovative exhibitions and programs such as *World War II and the American Dream: How Wartime Building Changed A Nation*. This exhibition is presented in conjunction with the 50th anniversary of World War II and it examines the most extensive building campaign in American history. It explores how wartime construction, from military installations to factories and defense housing, influenced success in the war and transformed the country's physical, cultural, and political landscape. This exhibition is especially relevant as America again faces a major military conversion, this time to a post-Cold War period.

The exhibition focuses on World War II architecture and includes models of the Pentagon, an aircraft plant by industrial designer Albert Kahn, a Navy blimp hangar,

the Cloverleaf defense housing project by Frank Lloyd Wright, and a futuristic postwar aero-house. Also included is wartime work by Richard Neutra, Buckminster Fuller, Walter Gropius and Marcel Breuer. Visitors will be able to experience an actual wartime quonset hut reconstructed in the galleries.

Of particular interest to architectural historians is the exhibit's use of artifacts to explore how military advances changed postwar buildings. Wartime objects that used molded plastic, laminated wood, and fiberglass will be paired with civilian products and furnishings such as aluminum siding, styrofoam building insulation, fiberglass wall panels, molded-plywood chairs, and plastic dinnerware.



Trailer housing for war workers near Detroit, Michigan. Photo courtesy of the Henry Ford Museum and Greenfield Village.

*World War II and the American Dream* will examine how, in the summer of 1940 after the fall of France, the wartime building program included new camps, air bases, factories, and housing projects on an unprecedented scale. To meet the emergency, builders adopted factory-production techniques to create millions of standardized dwellings. Laboratories developed new building materials and processes to conserve critical materials. For the first time in its history, America developed the capability to fight a major mechanized war overseas, and in doing so became the preeminent global power.

At home, patriotic publicity surrounding the construction program elevated this all-consuming effort into a symbol of American technological and organizational prowess. Wartime building achievements led the public to expect a new age of material developments after years of hardship and sacrifice. From suburban houses to shopping centers, from fluorescent lights to home appliances, an ever-expanding material culture seemed the just reward for victory in a war to protect the American way of life.

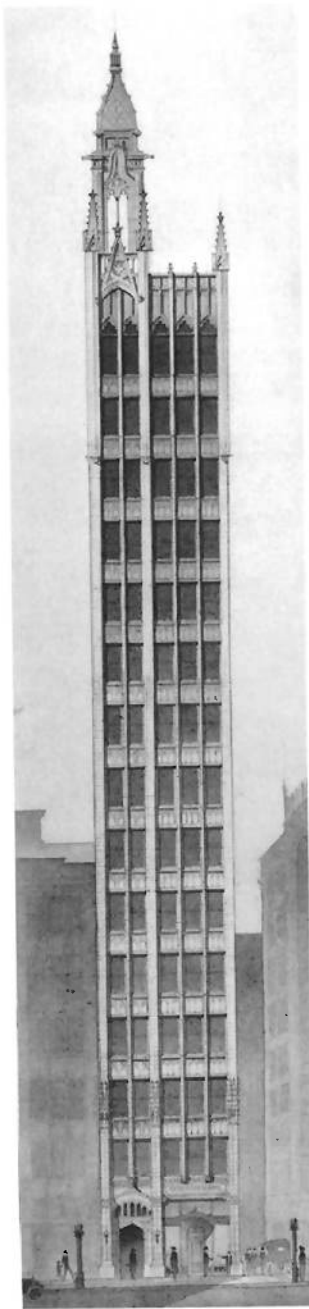
*World War II and the American Dream* will be presented at the National Building Museum from November 11, 1994 through December 31, 1995. The exhibit will be accompanied by an illustrated catalog and a series of public programs.

The MIT Museum opens an exhibition of historic architectural drawings, *From Louis Sullivan to SOM: Boston Grads Go To Chicago* on October 21, 1994. The exhibition will explore the explosive growth of the city of Chicago in the late nineteenth and early twentieth centuries. The contributions to this building boom by architects trained on the East Coast, and in particular Boston and MIT, will be the primary theme of the exhibition. These architects, who migrated to the midwest in the late 1800s and early 1900s, helped define both the urban and suburban landscapes of the Chicago we see today.

The imprint of graduates of the MIT Department of Architecture may be seen from the soaring skyscrapers of the Chicago skyline to the Prairie School houses in the suburbs. The work of "Boston grads" includes the Gothic campus of the University of Chicago (Henry Ives Cobb, class of 1880), the Inland Steel Building (Skidmore, Owings, and Merrill), and the domestic architecture of Prairie School architects Marion Mahony Griffin, Dwight Perkins, and Robert Spencer.

The exhibit will feature the student drawings of these and other architects as well as drawings by Frank Lloyd Wright, who both influenced and was influenced by their work. The exhibition will also explore the effect of the 1893 World's Columbian Exposition upon the architecture students in Boston. Several prominent buildings at the fair were designed by MIT alumni including Sophia Hayden's Women's Building, William Welles Bosworth's Vermont Building, Henry Ives Cobb's Fisheries Building, and Louis Sullivan's Transportation Building.

Artifacts, drawings, and photographs from the MIT Museum's architectural collections and from numerous repositories in Boston and Chicago are being brought together for this exhibition which is cosponsored by the



*Photo of "a drawing for a commercial office building" courtesy of the MIT Museum.*

New England Chapter, Society of Architectural Historians, the Martin Zimmerman '59 Fund, and the Friends of the Architecture Collections.

*From Louis Sullivan to SOM* may be viewed at the main exhibition center of the MIT Museum from October 21, 1994 until January 29, 1995. For further information, call 617/253-4444.

## GRANTS AND FELLOWSHIPS

The Architectural History Foundation continues to offer the **Vincent Scully, Jr. Research Grant** to stimulate book publication on an American architect or a group deserving scholarly investigation. Applicants should submit six collated copies of each application, to include the following:

- A one- to two-page, double-spaced book proposal, including projected date of manuscript conclusion, and specifying any publishing commitments.

- A one-page outline of how the award would be utilized.

- A sample of the applicant's writing, not longer than ten typed pages.

- A *curriculum vitae* including past and present grants.

- Three sealed letters of recommendation from qualified individuals must accompany the application. To insure receipt of the application, please include a stamped, self-addressed envelope. The yearly \$5,000 grant will be announced in April 1995. Materials will not be returned to the applicant.

For further information contact The Architectural History Foundation, 350 Madison Avenue, New York, NY 10017. Fax: 516/944-5961. Application deadline is February 1, 1995.

The **Peabody Essex Museum** (a consolidation of the Peabody Museum of Salem and the Essex Institute) in Salem, Massachusetts, is accepting applications for fellowships to encourage use of its library and museum collections for research and publication on New England history and culture. Fellowships are open to advanced scholars, graduate students, independent scholars, and library and museum professionals. Stipends, due in part to the generosity of the Salem Marine Society, will be awarded for up to two months, at a rate of \$750 a month. There is also the possibility of free housing.

For information and application forms, contact Fellowship Program, Phillips Library, Peabody Essex Museum, East India Square, Salem, MA 01970. Application forms and supporting materials must be received by January 31, 1995.

The **John Carter Brown Library** will award approximately fifteen short- and long-term Research Fellowships for the year June 1, 1995 to May 31, 1996. Short-term fellowships are available for periods of two to four months and carry a stipend of \$1,000 a month. Long-term fellowships, funded by the NEH, are for six months and carry a stipend of approximately \$2,600 per month. All fellows are expected to be in continuous residence at the Library for the entire term of the fellowship. Applicants for NEH fellowships may not be engaged in graduate work and must be U.S. citizens or

have resided in the U.S. for the three years immediately preceding the term of the fellowship.

The Library's holdings are concentrated on the history of the Western Hemisphere during the colonial period, emphasizing the European discovery, exploration, settlement, and development of the Americas, the indigenous response to the European conquest, and all aspects of European relations with the New World, including the impact of the New World on the Old. Research proposed by fellowship applicants must be suited to the holdings of the Library.

For application forms or additional information, write to Director, John Carter Brown Library, Box 1894, Providence, RI 02912. The application deadline for fellowships during the 1995-96 year is January 15, 1995.

The **Rockefeller Archive Center**, a division of Rockefeller University, invites applications for its program of Grants for Travel and Research at the Rockefeller Archive Center for 1995. The competitive program makes grants of up to \$1,500 to U.S. and Canadian researchers and up to \$2,000 to researchers from abroad in any discipline, usually graduate students or post-doctoral scholars, who are engaged in research that requires use of the collections at the Center. These include the records of the Rockefeller family, the Rockefeller Foundation, The Rockefeller University, and other philanthropic organizations and associated individuals.

Inquiries about the program and requests for applications should be addressed to Darwin H. Stapleton, Director, Rockefeller Archive Center, 15 Dayton Avenue, North Tarrytown, NY 10591-1958. The deadline for applications is December 31, 1994. Grant recipients will be announced in March, 1995.

## NEWS OF MEMBERS

**Gary Van Zante**, former Director of Resources at Hammond Beeby and Babka Architects in Chicago, has been appointed Curator of the Southeastern Architectural Archive at Tulane University in New Orleans. His appointment became effective in September, 1994.

Professor **Osmund Overby**, University of Missouri-Columbia, is the 1994 recipient of the University of Missouri's most prestigious faculty award, the Thomas Jefferson award. One faculty member is selected from one of the four campuses of the University "who exemplifies, through his life, his character, and his influence, the principles and the ideals of Thomas Jefferson."

Professor Overby is a past president of the SAH, a past editor of its *Journal*, and the present Editor-in-Chief of its *Buildings of the United States* series. He is one of the founders of the Missouri Alliance for Historic Preservation and is known for the students he has sent forth committed to the importance of our architectural heritage.

Another SAH member, Professor Emeritus **Kenneth LaBudde**, University of Missouri-Kansas City, was the 1988 recipient of the Thomas Jefferson award.

**Mark R. Edwards** has recently been appointed Georgia State Historic Preservation Officer, effective November 1, 1994. Mr. Edwards has held a variety of positions with the Maryland Historical Trust, most recently as Deputy Director and Deputy State Historic Preservation Officer. In this new position, he will serve as the Director of the Division of Historic Preservation with the Georgia Department of Natural Resources.

The following SAH members have received appointments at the Center for Advanced Study in the Visual Arts (CASVA) at the National Gallery of Art in Washington, D.C.:

**Patricia Waddy**, Syracuse University, is a Samuel H. Kress Senior Fellow, 1994-1995; **Yasser Tabbaa**, University of Michigan, Ann Arbor, is an Ailsa Mellon Bruce Senior Fellow, 1994-1995; **Jesús Escobar**, Princeton University, **Abby McGehee**, University of California, Berkeley, and **Kathryn A. Smith**, New York University, Institute of Fine Arts, are Predoctoral Fellows, 1994-1995; **Joseph Connors**, Columbia University, is an Ailsa Mellon Bruce Visiting Senior Fellow, November-December, 1994, and **Naomi Miller**, Boston University, is an Ailsa Mellon Bruce Visiting Senior Fellow, January-February, 1995.

**Don Kalec** has been appointed director of a new, graduate level, historic preservation program at the School of the Art Institute of Chicago.

## OBITUARY

**Jane Preddy**, an architectural historian specializing in theatrical architecture, died August 12, 1994, in Poughkeepsie, New York. Ms. Preddy was the founder of Architecture on Stage, a foundation for the study of theatres in New York, and an expert on the life of John Ebersson, who designed many Art Deco theatres. Her first show as the director of the gallery at the City College School of Architecture was devoted to New York's theatres of the 1930's. Ms. Preddy also taught at City College and lectured around Manhattan.

## MISCELLANEA AND CORREX

**Janet Smith** (University of Pennsylvania) is putting together an email address list for SAH members. Please send your email address to her at [smith@literacy.upenn.edu](mailto:smith@literacy.upenn.edu).

The announcement in the June *Newsletter* of the new monograph series directed by Professor Richard Etlin, "Modern Architecture and Cultural Identity," neglected to mention that it is being published by Cambridge University Press.

In the August *Newsletter*, Josiah Wedgwood's name was misspelled in the article about the Alice Davis Hitchcock Book Award.

## NOTES FROM ...

**Indiana** – The Citizen’s Bank in Poseyville, Indiana, won’t be one of the stops on the 1995 SAH Prairie Tour, but it is a good example of the type of architecture that one can expect to see.

Formerly the Bozeman-Waters Bank, Citizen’s Bank is often mistaken as a Louis Sullivan design. The bank’s simple form, small scale, and decorative features follow Sullivan’s principles to the letter. Like most of Sullivan’s banks, the Bozeman-Waters Bank is a polychromatic, wire-cut brick box set on a natural stone base and exuberantly ornamented with terra cotta. Decorative features adorn the entrance, window openings and cornice.

Coincidentally, the Bozeman-Waters Bank was built in 1924, the year of Sullivan’s death. The bank’s architect, Edward J. Thole, Sr., of Evansville, demonstrated a remarkable understanding of Sullivan’s work. Thole designed in many styles — including Collegiate Gothic and Richardsonian Romanesque — but his approach to the Sullivanesque style exhibited a true passion for this school of thought.

The Bozeman-Waters Bank is similar in many respects to the Sullivan-designed People’s Savings and Loan Association building in Sidney, Ohio. From this 1918 bank, Thole borrowed massing, fenestration, and ornament for the Bozeman-Waters Bank. Only the lack of articulation in the art glass, the narrower range of tonal variety and manipulation in the brickwork and the light color of the natural stone base separate the Bozeman-Waters Bank from Sullivan’s own work. (Reprinted with permission from *Indiana Preservationist* and the Historic Landmarks Foundation of Indiana)



*The former Bozeman-Waters Bank in Poseyville, Indiana. Photo by Michael Emerson.*

**China** – For well over 1,000 years, China, Central Asia, and the lands to the west were connected by trade routes collectively known today as the Silk Road. Beginning with the rule of the Han emperors, caravans following the route brought silk and other commodities such as ceramics, furs, iron, and cinnamon all the way from China to places as far west as Rome. Going east on this

ancient track were goods from the West which were favored in the east — among them woolen and linen textiles, amber, ivory, glass, and gold.

The Silk Road also served as a highway for religious thought, for along its great stretches traveled not only merchants but missionaries and pilgrims, carrying with



*The 9-story pagoda at Mogao that houses a sculpture of the Buddha over 108 feet high. Photo by Guillermo Aldana.*

them the creed of Buddhism which first flowered in India. It was via the Silk Road that Buddhism reached the Chinese, powerfully influencing their art and culture.

Long after the caravans vanished, a record of China in the days when the Silk Road flourished remained in the art of the Buddhist grotto temples established along the route. India has 1,200 known sites, China reports 250 and Sri Lanka has between 260 and 270. Eighty percent of these temples are Buddhist in origin and the evolution and typology of the rock temples have been little studied in a comparative way.

The Mogao Grottoes are 1,100 miles west of Beijing near the city of Dunhuang, an oasis at the edge of the Gobi Desert in Gansu Province. In the age of the Silk Road, Dunhuang was a major crossroads for the caravan routes that skirted along the northern and southern edges of the desolate and feared Takla Maken Desert. Situated in a barren landscape of rock mountains and vast sand dunes, the rock temples of Mogao were begun in the middle of the 4th century by a monk who had a vision of 1,000 Buddhas. Over the next ten centuries, Chinese Buddhists carved an extensive series of grottoes along the site’s one mile of cliff face. Today there remain more than 490 temples containing wall paintings covering 484,200 square feet, making Mogao the site of the largest single collection of Buddhist mural art in China.

Contributing to the grottoes’ survival through the



# SOCIETY OF ARCHITECTURAL HISTORIANS

1232 Pine Street, Philadelphia, PA 19107

## PUBLICATIONS AVAILABLE FROM SAH OFFICE – 1994

(This price list supersedes the one for 1993)

(Listed alphabetically by state and alphabetically by title within state; (\*) indicates new listing for 1994)

		Price*
AL	1) <b>Downtown Birmingham: Architectural and Historical Walking Tour Guide</b> , edited by Marjorie Longenecker White; Richard W. Sprague and G. Gray Plosser, Jr., architectural editors (142 pp.)	\$10.25
	2) <b>Nineteenth Century Mobile Architecture: An Inventory of Existing Buildings</b> , Mobile City Planning Commission (76 pp.)	7.25
	3) <b>The Birmingham District, An Industrial History and Guide</b> , by Marjorie Longenecker White (324 pp.)	16.45
CA	4) <b>Architecture in Los Angeles: A Compleat Guide</b> , by David Gebhard and Robert Winter (528 pp.)	17.45
	5) <b>A Guide to Architecture in San Francisco and Northern California</b> , by David Gebhard, Robert Winter and Eric Sandweiss (608 pp.)	19.45
	6) <b>The Founders &amp; the Architects—The Design of Stanford University</b> , by Paul V. Turner, with Marcia E. Vetrocq and Karen Weitzi (104 pp.)	9.25
	7) <b>The Sidewalk Companion to Santa Cruz Architecture</b> (revised edition), by John Chase (374 pp.)	7.50
DC	8) <b>Washington, D.C.</b> , by Richard Saul Wurman (192 pp.)	18.20
	9) <b>Washington on Foot</b> , (including Old Town Alexandria and Historic Annapolis); third edition, revised, edited by John J. Protopappas and Lin Brown (221 pp.)	8.20
FL	10) <b>Guide to Florida's Historic Architecture</b> , Florida Association/AIA (149 pp.)	23.45
GA	11) <b>AIA Guide to the Architecture of Atlanta</b> , text by Isabelle Gournay, edited by Gerald Sams (384 pp.)	21.45
IL	12) <b>An Architectural History of Carbondale, Illinois</b> , by Susan E. Maycock (191 pp.)	16.45
	13) <b>Chicago's Famous Buildings</b> (fourth edition), edited by Franz Schulze and Kevin Harrington (300 pp.)	10.50
	14) <b>Chicago Since the Sears Tower: A Guide to New Downtown Buildings</b> , by Mary Alice Molloy (25 pp.)	8.45
IN	● 15) <b>Indianapolis Architecture, Transformations Since 1975</b> , edited by Mary Ellen Gadski (200 pp.)	21.45
LA	16) <b>Landmarks of New Orleans</b> , compiled by Leonard V. Huber, introduction by Samuel Wilson, Jr. (115 pp.)	13.50
MD	17) <b>Somerset: An Architectural History</b> , by Paul Baker Touart and the Somerset County Historical Trust and the Maryland Historical Trust (424 pp.)/winner 1991 Downing Award.	25.00
	18) <b>Where Land and Water Intertwine, An Architectural History of Talbot County, Maryland</b> , edited by Christopher Weeks (264 pp.)	16.45
MA	19) <b>Architecture in Salem: An Illustrated Guide</b> , by Bryant F. Tolles, Jr., with Carolyn K. Tolles (311 pp.)	15.45
	20) <b>Beyond the Neck: The Architecture and Development of Somerville, Massachusetts</b> , by Carole Zellie, and Landscape Research (156 pp.)	11.25
	21) <b>Guide to New Bedford</b> (updated), by Barbara Clayton and Kathleen Whitley (186 pp.)	8.25
	22) <b>Winchester, Massachusetts, The Architectural Heritage of a Victorian Town</b> , The Winchester Historical Society (168 pp.)	15.20
MI	23) <b>View from the Veranda: The History and Architecture of the Summer Cottages on Mackinac Island</b> , by Phil Porter (70 pp.)	8.25
	24) <b>W. K. Kellogg and His Gull Lake Home</b> , by Linda Oliphant Stanford (54 pp.)	7.25
MO	25) <b>A Guide to the Architecture of St. Louis</b> , by George McCue and Frank Peters (212 pp.)	16.20
	26) <b>Kansas City</b> , Kansas City Chapter, AIA (260 pp.)	5.20
NH	27) <b>Building Portsmouth, The Neighborhoods &amp; Architecture of New Hampshire's Oldest City</b> , by Richard M. Candee (208 pp.)	16.20
NJ	28) <b>Guide to Flemington, New Jersey</b> , by Barbara Clayton and Kathleen Whitley (198 pp.)	9.45
NM	29) <b>New Mexico Architecture</b> (Vol. 12, devoted to Historic Architecture in Northern New Mexico), by Bainbridge Bunting and John Conron (58 pp.)	1.50
NY	30) <b>A Walking Tour of Cast Iron Architecture in SoHo</b> , by Margot Gayle and Robin Lynn (30 pp.)	3.75
	31) <b>Buffalo Architecture: A Guide</b> , introductions by Reyner Banham, Charles Beveridge and Henry-Russell Hitchcock; text by Francis R. Kowsky, Mark Goldman, Austin Fox, John D. Randall, Jack Quinan, and Teresa Lasher (336 pp.)	15.45
	32) <b>Chautauqua Impressions</b> , by Richard N. Campen (142 pp.)	17.50
	33) <b>Guide to New York City Landmarks</b> , by Andrew S. Dolkart (253 pp.)	8.25
	● 34) <b>Syracuse Landmarks, An AIA Guide to Downtown and Historic Neighborhoods</b> , by Evamaria Hardin (330 pp.)	18.50
OH	35) <b>Cincinnati Observed Architecture &amp; History</b> , by John Clubbe (531 pp.)	26.25
	36) <b>Distinguished Homes of Shaker Heights</b> , by Richard Campen (144 pp.)	42.50
	37) <b>Oberlin Architecture, College and Town: A Guide to its Social History</b> , by Geoffrey Biodgett (239 pp.)	11.45
OR	38) <b>An Architect Looks at Downtown Portland</b> , by Richard Ritz, FAIA	19.95

(continued on reverse)

\*Includes postage and handling. Pennsylvania residents add 6% sales tax.

		<b>Price*</b>
PA	39) <b>Historic Rittenhouse</b> , by Bobbye Burke, Otto Sperr, Hugh J. McCauley, and Trina Vaux (159 pp.)	\$19.00
	40) <b>Pittsburgh: An Urban Portrait</b> , by Franklin Toker (400 pp.)	16.95
RI	41) <b>Providence, A Citywide Survey of Historic Resources</b> , by Wm. McKenzie Woodward and Edward F. Sanderson (278 pp.)	16.45
TX	42) <b>Houston Architectural Guide</b> , by Stephen Fox (318 pp.)	15.50

#### GENERAL

	43) <b>The Cape Cod House: An Introductory Study</b> , by Ernest Allen Connally (10 pp.)	1.75
●	44) <b>Historic Coastal New England, From Greenwich to Kennebunkport</b> , by Barbara Clayton and Kathleen Whitley (384 pp.)	19.50
	45) <b>The Architecture of Frank Lloyd Wright, A Complete Catalog</b> (second edition), by William Allin Storrer (464 pp.)	18.45
	46) <b>The Architecture of Frank Lloyd Wright, A Guide to Extant Structures</b> (a companion to the Complete Catalog), by William Allin Storrer (66 pp.)	12.50
	47) <b>Identifying American Architecture, A Pictorial Guide to Styles and Terms, 1600-1945</b> (second edition), by John J.-G. Blumenson (118 pp.)	13.20
	48) <b>The Sixth Old House Catalogue</b> , compiled by Lawrence Grow (224 pp.)	14.75
	49) <b>What Style is it? A Guide to American Architecture</b> , by John C. Poppeliers, S. Allen Chambers, Jr., and Nancy B. Schwartz (112 pp.)	9.20
	50) <b>Early American Homes for Today, A Treasury of Decorative Details and Restoration Procedures</b> , by Herbert Wheaton Congdon (236 pp.)	14.45
	51) <b>The Church of Notre Dame in Montreal, An Architectural History</b> , (second edition), by Franklin Toker (124 pp.)	24.95

#### HABS CATALOG

	<b>Georgia Catalog</b> , by John Linley (432 pp.)	19.95
	<b>Indiana</b> , edited by Thomas M. Slade (156 pp.)	9.20
	<b>The Iowa Catalog</b> , by Wesley I. Shank (158 pp.)	13.20
	<b>Historic Architecture of Maine</b> , by Denys Peter Myers (254 pp.)	8.95
	<b>Historic American Buildings Survey of New Jersey</b> , compiled by William B. Bassett; edited by John Poppeliers (210 pp.)	11.20

#### SAH EDUCATION COMMITTEE PUBLICATIONS

	<b>1992 Guide to Graduate Degree Programs in Architectural History</b> , Richard Betts/SAH Education Committee	6.00
	<b>Report on Architectural History and Historic Preservation Programs</b> , George Ehrlich and Margaret Supplee Smith	3.00
	<b>Report on Architectural History Education in Schools of Architecture</b> , Dora Wiebenson/SAH Education Committee	3.00
	<b>Report on Architectural History Education in Graduate Art History Programs</b> , Dora Wiebenson/SAH Education Committee	3.00
	<b>Report on Architecture Libraries: Scope, Organization, and Standards</b> , Adolf K. Placzek/SAH Education Committee	3.00
	<b>Report on Architectural History Education in Art History Departments</b> , Leon Satkowski/SAH Education Committee	3.00
	<b>Report on Architectural History Education in Canadian Universities with Schools of Architecture</b> , Pierre du Prey/SAH Education Committee	3.00
	<b>Report on Architectural History Education in Undergraduate Departments of Architecture</b> , Neil Jackson/SAH Education Committee	5.00
	<b>An Annotated Bibliography on African-American Architects and Builders</b> , by Ellen Weiss (Teaching Materials in Architectural History, #1, Series Editor: Richard J. Betts)	5.00

#### OTHER PUBLICATIONS AVAILABLE

**Bibliography of Doctoral Dissertations Relating to American Architectural History, 1897-1991**, compiled by James M. Goode, (First edition), (138 pp.) SAH members/\$25; non-members/\$40.

The following **hardback** publications in the **Buildings of the United States** series are available from the Oxford University Press, 200 Madison Avenue, New York, NY 10016; **Buildings of Michigan**, by Kathryn Bishop Eckert (\$45.00); **Buildings of Iowa**, by David Gebhard and Gerald Mansheim (\$45.00); **Buildings of the District of Columbia**, by Pamela Scott and Antoinette J. Lee (\$45.00); and **Buildings of Alaska**, by Allison K. Hoagland (\$45.00).

**Tour Notes** for the following **SAH tours** are available upon request: Yugoslavia, Portugal, China, Sicily (Syllabus), English Midlands, Tunisia, Sweden, Turkey, Providence/Newport, Southern Indiana, North Carolina, Los Angeles, Florida, Southern Illinois, Connecticut River Valley, and Pittsburgh. Prices vary and an invoice will be sent before shipping.

**Abstracts of Papers Presented at SAH Annual Meetings (1976-1993)** may be obtained from the SAH office; the abstracts for the 1994 Annual Meeting will be available after May 1, 1994. Prices vary, and will be sent upon request.

---

**20-Year (1941-1961) Index of JSAH**, by Shirley Prager Branner:  
Hardcover Now \$8.00\*                      Softcover Now \$5.00\*

---

\*Includes postage and handling. Pennsylvania residents add 6% sales tax. Prices and availability subject to change without notice.



centuries are Mogao's remoteness and the arid climate. Still, serious problems confront the site, including the fact that it sits on the edge of an earthquake zone. In 1988, the Getty Conservation Institute began collaborating with the People's Republic of China in developing a conservation program for the grottoes at Mogao and others.

Last year, experts from around the world gathered near the Mogao site to share ideas on the preservation of temple grottoes. Since rapidly increasing tourism is a major challenge for site managers in Asia, it was stressed by several at the conference that consideration of the economic potential of a site must be tempered with a recognition of a site's preservation needs. The temptation to exploit a site can ultimately lead to site damage if public access is provided without carefully considered safeguards. (Excerpts from the article "Buddhist Grottoes on the Silk Road" by Jeffrey Levin are reprinted from Volume IX, Number 1 of *Conservation*, The GCI Newsletter)

**Rhode Island** – In *The Newport Daily News* of October 27, 1881, it is recorded "Mr. P.E. Reed is making good progress with Mr. Isaac Bell's villa on Bellevue Avenue ... The cellar has been dug and the cross beams will be



*Photos of the Isaac Bell House courtesy of the Preservation Society of Newport County. Collection of John Hopf.*

placed in position in a day or two. The first story will be of brick and the others of wood. The style will be Queen Anne and the cost about \$40,000. The house will be finished about May first, 1882. The architects of Mr. Bell's house are McKim, Mead and White of New York."

Thus, one of the country's greatest Shingle Style houses came into being. Now, 112 years later, the Preservation Society of Newport County has purchased the property and is committed to preserving the exterior and the interior, as well as protecting the neighborhood where the Bell House is located.

The Bell House is of particular interest to architectural historians, not only as an outstanding example of the early work of a prolific and important firm, but as a landmark in American late-19th century domestic architecture. The facades of the house are composed of features borrowed from the Colonial era, such as sweeping gables, small-paned windows surmounted by shell motifs, and wood shingles, a traditional surfacing material, here arranged in innovative wave and diamond patterns. One of the most striking aspects of the Bellevue Avenue facade is the series of first and second floor porches with slender faux bamboo supports, reflecting the architects' interest in combining Japanese-inspired details with the building's colonial elements. The rounded tower with a bell-shaped roof is a picturesque device that also appears in the inner court of the Newport Casino.

The Preservation Society purchased the property with funds loaned by an anonymous member of the Society for this explicit purpose. It is the intention of the Society that the house will remain on the Newport tax rolls and that ultimately a suitable buyer will be found who will preserve the house and its interiors. This will be insured by protective covenants placed on the house at the time of its resale.

## 1995 SAH Annual Meeting

Stouffer-Madison Hotel  
Seattle, Washington  
April 5-9, 1995

Publications List for  
**Friends of Terra Cotta Press**  
sent upon request

Contact: FOTC, c/o Tunick  
771 West End Avenue, 10 E  
New York, NY 10025

**University of Florida  
Department of Architecture**

**Beinecke-Reeves Distinguished Chair  
in Architectural Preservation**

The University of Florida Department of Architecture is pleased to announce the establishment of the Beinecke-Reeves Distinguished Chair in Architectural Preservation. The Distinguished Chair is named in honor of Mr. Walter Beinecke, whose interest and support has made possible the Department of Architecture's Preservation Institute; Nantucket, and Professor Emeritus F. Blair Reeves, FAIA, founder and director of the Institute for twenty years. The Beinecke-Reeves Distinguished Chair in Architectural Preservation will enhance the long-standing program of excellence in preservation research and education that has existed in the Department of Architecture for the past three decades.

The Department of Architecture seeks an exemplary scholar who will both address critical issues in architectural preservation and attract national and international students as well as leading professionals and faculty. The scholar will contribute to the development of both the preservation graduate and doctoral programs on the University of Florida campus in Gainesville, Florida, and the Preservation Institute, Nantucket.

The successful candidate must demonstrate evidence of an unusually strong and innovative background in architectural preservation and an understanding of theory and practice of related disciplines. The College of Architecture has supporting programs in Architecture, Landscape Architecture, Interior Design, Building Construction, and Urban and Regional Planning. The department and college have active off-campus programs in significant historic locations to support the academic and research work of the Distinguished Chair. These include the Vicenze Institute; Architecture, Preservation Institute; Caribbean, and the Education and Research Center located in the art-deco district of Miami Beach.

Because of the diverse areas of expertise required in preservation, the Beinecke-Reeves Distinguished Chair is to be occupied on a rotating basis. The position will generally be appointed and occupied for a maximum of two years by the successful candidate. The Chair will be available in July, 1995. Salary and supporting benefits are competitive. Applications will be accepted beginning October 15, 1994. The deadline for receiving applications is January 15, 1995. Applicants should submit a letter of interest, a current resume, and three letters of reference for the position to:

Beinecke-Reeves Distinguished Chair  
in Architectural Preservation  
Search Committee  
231 Architecture Building  
Department of Architecture  
University of Florida  
Gainesville, Florida 32611

The University of Florida is an EO/AA employer and actively seeks qualified applicants. Nominations from the academic and professional community are encouraged.

**POSITIONS AVAILABLE**

The University of Houston College of Architecture seeks applications for a faculty position in architectural history commencing Fall of 1995. Candidates should hold an architectural history degree (master or doctorate), as well as a professional degree in architecture. Several years teaching experience and a record of scholarly achievement are highly desired. Academic responsibilities will include coordinating the architectural history survey at the graduate and undergraduate levels as well as developing and teaching electives in history and theory.

As part of the interview process, selected candidates will be offered stipends to serve as week-long visiting lecturers during the 1994-1995 academic year. A committee began reviewing candidates on 1 August, 1994. Letters of interest, *curriculum vitae*, and questions should be sent to The Architecture History Search Committee, University of Houston, College of Architecture, Houston, TX 77204-4431.

The University of Houston is an equal opportunity/affirmative action employer. Minorities, women, veterans, and persons with disabilities are encouraged to apply.

**Massachusetts Institute of Technology**, Dept. Arch., History, Theory and Criticism Section Architectural Historian • 19th/20th Centuries, Advanced Asst. Professor (tenure track) through Associate with tenure. PhD, significant publications, teaching experience. Start September 1995. EO/AA. Send cv, publication(s), three letters of recommendation to: Stanford Anderson, Rm 7-303, MIT, Cambridge, MA 02139.

**Call For Session Proposals  
49th Annual Meeting  
St. Louis, Missouri  
April 17-21, 1996**

Members wishing to chair an open or a thematic session at the 1996 Annual Meeting in St. Louis are invited to submit proposals by January 1, 1995, to Patricia Waddy, Center for Advanced Study in the Visual Arts, National Gallery of Art, Washington, D.C. 20565.

Sessions are sought that, together, will respond to the full range of architectural-historical interests of the membership and will provide a forum for the presentation and discussion of discoveries, issues, and ways of dealing with our material. For this meeting in St. Louis, topics concerning the diffusion and interaction of cultures, geography and architecture, Native American culture, housing and urban development, and engineering and technology are especially appropriate.

Potential chairpersons of thematic sessions should submit a one- to two-page prospectus explaining the range and significance of the proposed topic. Proposers of open sessions should submit a brief statement of their philosophy for an open session.

## CALL FOR PAPERS/PROPOSALS

The editors of *The Classicist* announce a Call for Papers and Projects to be published in the next year. The work may be related to any theoretical or practical aspect of classical architecture and its allied disciplines, including painting, sculpture, and the decorative arts. Of special interest for this issue is material dealing with the topic of archaeology and its relationship to contemporary classicism. Contributions in all subject areas are welcome from architects, artists, archaeologists, scholars, interior designers and decorators, builders, craftspeople and students. All papers must be accompanied by a 250-word abstract. Illustrations should be provided in the form of black and white, 8 1/2" by 11" photocopies. If selected for publication, papers will need to be re-submitted on computer disk. For additional information or to submit papers, contact: *The Classicist*, c/o The Institute for the Study of Classical Architecture, New York Academy of Art, 111 Franklin Street, New York, NY 10013. Submission deadline is December 31, 1994.

The University of Hawaii School of Architecture, the East-West Center, and the Honolulu Chapter/AIA invite paper proposals for the **First International Symposium on Asia Pacific Architecture: The East-West Encounter**, to be held in Honolulu, Hawaii, March 22 - 24, 1995. The symposium will address topics on the culture and architecture of the Asia Pacific region, focusing on sociological/political/anthropological concerns, business practice issues, history and theory, traditional architectural responses to regional climatic

factors, and architectural and planning case studies from Hawaii and elsewhere in the Asia Pacific region.

The Call for Papers is for two sessions - *Traditional Architectural Responses to Asian Pacific Climates: Understanding Regional Contexts* and *The Encounter of Western and Eastern Architectural Traditions in Asia or the Pacific Basin*.

A 250-word abstract of the proposed topic must be submitted. Graphic material is encouraged. The authors of the selected abstracts will be awarded a nominal honorarium and given guidelines to develop a 10-12 page monograph coordinated to a consistent format. The completed monographs are to be presented at the symposium in March.

For additional information or to submit abstracts, contact Symposium Coordinator, School of Architecture, University of Hawaii, 1859 East West Road, Honolulu, HI 96822. Submission deadline is November 1, 1994.

**The National Endowment for the Humanities** is establishing new application deadlines for its Conferences Program. Beginning in 1995, these deadlines will be:

May 15, with awards to be announced by the following December, and

December 15, with awards to be announced by the following August.

The Conferences Program supports scholarly meetings that promise to advance the state of research on topics in the humanities. Interested persons may contact staff of the Conferences Program at the Division of Research Programs, Room 318, National Endowment for the Humanities, 1100 Pennsylvania Avenue, N.W., Washington, D.C. 20506. 202/606-8210.

## ACADEMIC POSITION ARCHITECTURAL HISTORY

### Beginning Academic Year 1995-96

A full-time junior faculty position is available for a person qualified to offer graduate-level instruction in Architectural History for professional students at the Graduate School of Design. This position may be filled at the Assistant or Associate Professor level for a fixed term, normally of three years, with responsibilities for teaching, scholarship and administration. Candidates should have completed a doctorate or equivalent and demonstrated strong promise of creative achievement in the field. Some teaching experience is desirable. Candidates should be qualified to offer lecture and seminar courses in one or several topical or thematic areas. Preference will be given to candidates whose specialty adds to the breadth of expertise of the existing faculty.

Applications are invited before 15 November 1994 on the application forms available from: **Harvard University, Graduate School of Design, Office of Faculty Planning, 48 Quincy Street, S203, Cambridge, MA 02138. TEL: (617) 495-5409; FAX: (617) 496-5310.** Applicants should not send portfolio or dossiers with their applications. Harvard University is an Equal Opportunity/Affirmative Action employer.



**HARVARD UNIVERSITY**  
Graduate School of Design

# the Book List

October 1994

Recently published architectural books selected by Judith Holliday, Librarian, Fine Arts Library, Cornell University.

- Adjmi, Morris and Giovanni Bertolotto, eds. *Aldo Rossi : drawings and paintings*. New York: Princeton Architectural Press, 1993. 215 p. \$55.00, \$35.00. ISBN 1-878271-49-1, 1-878271-50-4
- Allinson, Kenneth and Victoria Thornton. *Guide to London's contemporary architecture*. Boston: Butterworth Architecture, 1993. 128 p. ISBN 0-7506-0782-3
- Aragozzini, Giovanna and Marco Nocca, eds. *Le piante di Roma : dal Cinquecento all'Ottocento*. Rome: Dino Audino, 1993. 157 p. L70000
- Architettura del XX secolo*. Milan: Jaca Book, 1993. 451 p. (Enciclopedia tematica aperta) L145000. ISBN 88-16-43911-4
- Badetempel : Volksbäder aus Gründerzeit und Jugendstil*. Berlin: Ernst & Sohn, 1993. 112 p. ISBN 3-433-02411-1
- Beck, Julia and Alec Keefer, eds. *Vernacular architecture in Ontario : proceedings of a conference held in Brantford, April, 1992*. Toronto: Architectural Conservancy of Ontario, 1993. 108 p. ISBN 0-9691491-3-1
- Bentley, James. *Fort towns of France : the bastides of the Dordogne & Aquitaine*. London: Tauris Parke Books, 1993. 224 p. L17.95. ISBN 1-85043-608-8
- Bohle-Heintzenberg, Sabine and Manfred Hamm, eds. *Ludwig Persius : Architekt des Königs*. Berlin: Gebr. Mann, 1993. 175 p. ISBN 3-7861-1713-6
- Bolzani, Gianpaolo, ed. *La piazza nelle città veneziane : il luogo degli incontri*. Padua: Centro Editoriale Veneto, 1993. 91 p. L35000
- Bonell y Gil-Rius : *introduccion*. Barcelona: Gustavo Gili, 1993. 96 p. (Catálogos de arquitectura contemporanea = Current architecture catalogues) ISBN 84-252-1515-3
- Bucci, Federico. *Albert Kahn : architect of Ford*. New York: Princeton Architectural Press, 1993. 186 p. Trans. of *Architetto di Ford*. \$24.95. ISBN 1-878271-84-9
- Calthorpe, Peter. *The next American metropolis : ecology, community and the American dream*. New York: Princeton Architectural Press, 1993. 175 p. \$24.95. ISBN 1-878271-68-7
- Capecchi, Gabriele. *Il giardino di Boboli : un anfiteatro per la gioia dei granduchi*. Florence: Medicea, 1993. 143 p. (Fronde d'oro) L38000
- Cesar Pelli : *selected and current works*. Mulgrave, Victoria, Australia: Images Publ. Group, 1993. 256 p. (The master architect series) \$60.00. ISBN 1-875498-13-3
- Cocke, Thomas and Peter Kidson. *Salisbury Cathedral : perspectives on the architectural history*. London: HMSO, 1993. 104 p. L12.95. ISBN 0-11-300040-5
- Conforti, Claudia. *Vasari architetto*. Milan: Electa, 1993. 277 p. L160000. ISBN 88-435-4204-4
- Crook, John, ed. *Winchester Cathedral : nine hundred years, 1093-1993*. Chichester, West Sussex: Phillimore, 1993. 365 p. L40.00. ISBN 0-85033-852-2
- Denison, Cara D., et al. *Exploring Rome : Piranesi and his contemporaries*. New York: Pierpont Morgan Library ; Montreal : Centre Canadien d'Architecture/Candian Centre for Architecture, 1993. 243 p. \$39.95. ISBN 0-87598-097-X
- Drew, Philip. *Real space : the architecture of Martorell, Bohigas, Mackay, Puigdomènech*. Tübingen: Wasmuth, 1993. 223 p. ISBN 3-8030-2803-5
- Economakis, Richard, ed. *Building classical : a vision of Europe and America*. London: Academy Editions ; Berlin: Ernst & Sohn, 1993. 299 p. ISBN 1-85490-288-1
- Eisold, Norbert. *Das Dessau-Wörlitzer Gartenreich : der Traum von der Vernunft*. Cologne: DuMont, 1993. 181 p. (DuMont Taschenbücher; 286) DM24.80. ISBN 3-7701-3142-8
- Federal historic preservation laws*. Washington, D.C.: U.S. Dept. of the Interior, National Park Service, Cultural Resources Program, 1993. 92 p. ISBN 0-16-042906-4
- Fitoussi, Brigitte, et al., eds. *Antonio Citterio & Terry Dwan architecture & design 1992-1979*. Zurich: Artemis, 1993. 163 p. ISBN 3-7608-8406-7
- Friedman, Joseph. *Spencer House : chronicle of a great London mansion*. London: Zwemmer, 1993. 368 p. L39.50. ISBN 0-302-00617-6
- La Galleria Alfano a Bagheria : architetti Alberto Campanelli e Giuseppe Mangano*. Palermo: L'Epos, 1993. 32 p. L18000
- Geist, Johann Friedrich, et al. *Hans Scharoun, Chronik zu Leben und Werk*. Berlin: Akademie der Künste, 1993. 160 p. DM40. ISBN 3-88331-974-0
- Giorgio Fiorese : *progetti e realizzazioni di architettura*. Florence: Alinea, 1993. 120 p. (Cataloghi-monografie; 18) L30000
- Gough, Piers. *Three urban projects : Alban Gate, Embankment Place, Vauxhall Cross ; architect Terry Farrell*. London: Wordsearch, 1993. 63 p. (Blueprint extra; 09) L12.00. ISBN 1-874235-09-0
- Gresleri, Giuliano, et al., eds. *Architettura italiana d'oltremare, 1870-1940*. Venice: Marsilio, 1993. 396 p. L75000. ISBN 88-317-5918-3
- Hamann, Conrad. *Cities of hope : Australian architecture and design by Edmond and Corrigan, 1962-92*. Melbourne: Oxford Univ. Press, 1993. 199 p. ISBN 0-19-553467-0
- Heyer, Paul. *American architecture : ideas and ideologies in the late Twentieth Century*. New York: Van Nostrand Reinhold, 1993. 204 p. ISBN 0-442-01328-0
- Hommann, Mary. *City planning in America : between promise and despair*. Westport, CT: Praeger, 1993. 155 p. \$45.00. ISBN 0-275-94473-5
- Huber, Benedikt. *Die Stadt des neuen Bauens : Projekte und Theorien von Hans Schmidt*. Zurich: VDF, Verlag der Fachvereine ; Stuttgart: B.G. Teubner, 1993. 137 p. (ORL-Schriften; 45) ISBN 3-7281-1971-7
- Ignacio Vicens, Jose Antonio Ramos*. Almeria: Colegio Oficial de Arquitectos, 1993. 57 p. (Documentos de arquitectura; 25) Ptas 2400
- Jean, Raymond. *Bibliothèques, une nouvelle génération : dix ans de constructions pour la lecture publique*. Paris : Réunion des Musées Nationaux, 1993. 196 p. (Collection Enjeux-culture) ISBN 2-7118-2869-7
- Johnson, Eugene J. *Style follows function : architecture of Marcus T. Reynolds*. Albany, NY: Washington Park Press : Mount Ida Press, 1993. 120 p. ISBN 1-881324-01-X

- Kaplan, Ken and Ted Krueger. *Mosquitoes : a handbook for survival*. New York: Princeton Architectural Press, 1993. 79 p. (Pamphlet architecture; 14) \$10.95. ISBN 1-878271-83-0
- Kettner, Johann. *Balthasar Neumann in Gössweinstein, das Baugeschehen nach den Schriftquellen*. Munster: Lit, 1993. 323 p. (Bonner Studien zur Kunstgeschichte; Bd. 5) DM58.80. ISBN 3-89473-454-X
- Kleihues, Josef Paul, ed. *Berlin/New York : like and unlike : essays on architecture and art from 1870 to the present*. New York: Rizzoli, 1993. 511 p. ISBN 0-8478-1657-5
- Kraus, Wolfgang and Peter Muller. *The Palaces of Vienna*. New York: Vendome Press, 1993. 239 p. Trans. of *Wiener Palais*. \$60.00. ISBN 0-86565-132-9
- Laroche, Claude. *Architecture et identité régionale : Hossegar 1923-1939*. Bordeaux: Le Festin, 1993. 271 p. F290. ISBN 2-909423-10-7
- Lawson, Simpson F., et al. *Courthouse design : the first international conference*. Washington, D.C.: American Institute of Architects Press, 1993. \$20.00. ISBN 1-55835-118-3
- Lyall, Sutherland, ed. *Herron notebooks : buildings in Japan*. London: Artemis, 1993. 119 p. ISBN 1-874056-90-0
- Magnago Lampugnani, Vittorio, ed. *Hong Kong architecture : the aesthetics of density*. New York: Prestel, 1993. 159 p. \$50.00. ISBN 3-7913-1324-X
- Malusardi, Federico. *Luigi Piccinato e l'urbanistica moderna*. Rome: Officina, 1993. 558 p. L60000
- Matarasso, François. *The English castle*. London: Cassell, 1993. 224 p. L16.99. ISBN 0-304-34045-6
- McEwen, Indra Kagis. *Socrates' ancestor : an essay on architectural beginnings*. Cambridge, MA: MIT Press, 1993. 194 p. \$30.00. ISBN 0-262-13292-3, 0-262-63148-2
- Messineo, Gaetano and Andrea Carbonara. *Via Flaminia*. Rome: Istituto Poligrafico e Zecca dello Stato, 1993. 185 p. (Antiche strade-Lazio) L45000. ISBN 88-240-0418-0
- Michell, George, ed. *Temple towns of Tamil Nadu*. Bombay: Marg, 1993. 128 p. Rs795. ISBN 81-85026-21-1
- Moffett, Marian and Lawrence Wodehouse. *East Tennessee cantilever barns*. Knoxville: Univ. of Tennessee Press, 1993. 141 p. \$29.95. ISBN 0-87049-798-7
- Moroder, Joachim and Peter Benno. *Hotelarchitektur : Bauten und Projekte für den Tourismus in alpinen Raum, 1920-1940*. Innsbruck: Haymon-Verlag, 1993. 253 p. ISBN 3-85218-139-9
- Nerdinger, Winfried, ed. *Bauen im Nationalsozialismus : Bayern 1933-1945*. Munich: Klinkhardt & Biermann, 1993. 584 p. DM128. ISBN 3-7814-0360-2
- Nicoletti, Anna Maria. *Via XX settembre a Genova : la costruzione della città tra Otto e Novecento*. Genoa: Sagep, 1993. 247 p. L50000. ISBN 88-7058-507-7
- Nicot, Guy. *Au Louvre : la cour Napoléon transfigurée*. Paris: Réunion des Musées Nationaux, 1993. 119 p. ISBN 2-7118-2981-2
- Occhialini, Etra Connie and Sabina Zappalà, eds. *La città contemporanea : atti del convegno*. Catania: c.u.e.c.m., 1993. 120 p. L26000
- Pampe, Jörg, ed. *Körper, Flächen, Linien : eine römische Architekturrelekture in Zeichnungen*. Braunschweig: Vieweg, 1993. 119 p. DM48. ISBN 3-528-08747-1
- Peter Wels : *Architekturzeichnung*. Hamburg: Junius, 1993. 260 p. DM148. ISBN 3-88506-222-4
- Plum, Gilles. *Le Grand Palais : l'aventure du Palais des Beaux-Arts*. Paris: Réunion des Musées Nationaux, 1993. 143 p. F190. ISBN 2-7118-2611-2
- Protzen, Jean-Pierre. *Inca architecture and construction at Ollantaytambo*. New York: Oxford Univ. Press, 1993. 303 p. \$75.00. ISBN 0-19-507069-0
- Quarg, Gunter, ed. *Katalog der Bibliothek Jakob Ignaz Hittorff = Catalogue de la bibliothèque privée de Jacques Ignace Hittorff*. Cologne: Universitäts- und Stadtbibliothek Köln, 1993. 125 p. (Schriften der Universitäts- und Stadtbibliothek; 4)
- Quirk, Howard E. *The living cathedral : St. John the Divine : a history and guide*. New York: Crossroad, 1993. 159 p. \$25.00, \$14.95. ISBN 0-8245-1227-8, 0-8245-1237-5
- Ricardo Porro : *oeuvres/obras 1950-1993*. Paris: Institut Français d'Architecture, 1993. 219 p. F150
- Ron Arad Associates : *one off three*. London: Artemis, 1993. 60 p. L19.95. ISBN 1-874056-95-1
- Sanfilippo, Mario. *La costruzione di una capitale : Roma 1911-1945*. Cinisello Balsamo: Silvana, 1993. 156 p. L90000. ISBN 88-366-0424-2
- Schiattarella, Amedeo. *Richard Neutra : 1892-1970*. Rome: Officina, 1993. 133 p. (Dizionario monografico degli architetti moderni e contemporanei; 6) L20000
- Shaver, Peter D., comp. *The National Register of Historic Places in New York State*. New York: Rizzoli, 1993. 248 p. \$40.00. ISBN 0-8478-1789-X
- Smith, J. Frazer. *Plantation houses and mansions of the Old South*. New York: Dover, 1993. 252 p. \$11.95. Originally published as *White pillars*, 1941. ISBN 0-486-27848-4
- Spagnoli, Lorenzo. *Berlino : XIX-XX secolo*. Bologna: Zanichelli, 1993. 279 p. (Guida all'architettura moderna) L48000. ISBN 88-08-14174-8
- Steele, James. *Schnabel House: Frank Gehry*. London: Phaidon, 1993. unpagged (Architecture in detail) L19.95. ISBN 0-7148-2749-5
- Taillard, Christian. *Le grand théâtre de Bordeaux : miroir d'une société*. Paris: CNRS Editions, 1993. 127 p. (Patrimoine au présent) F120. ISBN 2-222-04768-4
- Tylenda, Joseph N. *The pilgrim's guide to Rome's principal churches*. Collegeville, MN: Liturgical Press, 1993. 340 p. \$14.95. ISBN 0-8146-5016-3
- Venturi Ferriolo, Massimo. *Giardini del Giappone*. Milan: Fenice 2000, 1993. 198 p. L100000. ISBN 88-8017-078-3
- Visions for the future*. London: Academy Editions, 1993. 95 p. (Architectural design profile; no. 104) ISBN 1-85490-197-4
- Waite, Diana S., ed. *Albany architecture : a guide to the city*. Albany, NY: Mount Ida Press, 1993. 278 p. ISBN 0-9625368-1-4
- Walter, Uli. *Sozialer Wohnungsbau in München, die Geschichte der GWG (1918-1993)*. Munich: Bruckmann, 1993. 176 p. DM78. ISBN 3-7654-2609-1
- Wilkinson-Zerner, Catherine. *Juan de Herrera : architect to Philip II of Spain*. New Haven: Yale Univ. Press, 1993. 216 p. \$50.00. ISBN 0-300-04991-9
- Worsley, Giles, ed. *Adam in context : papers given at the Georgian Group Symposium 1992*. London: The Georgian Group, 1993. 72 p. L17.28. ISBN 0-9517461-2-X
- Zevi, Bruno. *Ebraismo e architettura*. Florence: Giuntina, 1993. 91 p. (Schulim Vogelmann; 36) L20000. ISBN 88-85943-76-4

Search Re-Opened

# DEAN SCHOOL OF ARCHITECTURE and ENVIRONMENTAL STUDIES

**THE INSTITUTION:** Established in 1847, The City College is the oldest of the City University's colleges, with approximately 15,000 undergraduate and graduate students enrolled on a 35-acre campus. In addition to the School of Architecture and Environmental Studies, City College consists of a College of Liberal Arts and Science and Schools of Education, Biomedical Education, Engineering, Nursing, and General Studies.

The School of Architecture and Environmental Studies enrolls a student body of 850 students of diverse ethnic and national backgrounds. The School awards professional and undergraduate degrees in Architecture, a professional degree in Landscape Architecture and a graduate degree in Urban Design. The School is one of the few publicly funded schools of architecture in the Northeast and offers exciting opportunities for new educational initiatives.

**RESPONSIBILITIES:** The Dean assumes leadership in the management and administration of the School, curriculum development, program planning and the acquisition of external funding. The Dean reports to the President and Provost and maintains liaison with other administrators of the College, Federal, State, and City agencies, related organizations and associations, and community leaders.

**REQUIREMENTS:** The successful candidate should be an Architect and demonstrate a commitment to Urban Architectural Education, with a history of teaching, administration, and distinguished professional accomplishment such that he or she would qualify for the rank of tenured full professor.

**SALARY:** \$89,762-99,872, commensurate with qualifications and experience. Excellent benefits package.

**APPLICATIONS AND NOMINATIONS:** Applicants should send a letter of interest and qualifications, their curriculum vitae, and should identify four references to be contacted at a later date with the applicant's specific permission. Nominations should be accompanied by the nominee's curriculum vitae when possible. Applications and nominations should be sent by November 15, 1994; however, applications and nominations will be considered until the position is filled.

Correspondence should be addressed to: **Search Committee for the Dean of the School of Architecture and Environmental Studies, Administration Building, Rm 206**



## CITY COLLEGE OF NEW YORK

Convent Avenue at 138th Street  
New York, NY 10031

An EO/AA Employer M/F/D/V

Society of Architectural Historians  
1232 Pine Street  
Philadelphia, PA 19107-5944

Non-Profit Org.  
U. S. Postage  
PAID  
Kansas City, Mo.  
Permit No. 4085

October 1994

Vol. XXXVIII No. 5



The *Newsletter* is published every even month by the Society of Architectural Historians (phone: 215/735-0224; fax: 215/735-2590). Deadline for submission of material is the 15th of the preceding even

month — that is, one-and-one-half months ahead of publication.

Send editorial correspondence and submissions for publication to: Diane Greer, School of Architecture, Florida A&M University, 1936 Martin Luther King, Jr. Blvd., Tallahassee, FL 32307. If possible, submit text on disk; any DOS-based format is acceptable.

Editor: Diane Greer  
Book List Editor: Judith Holliday

### SAH Officers

President: Keith Morgan, 617/353-2520  
1st V.P.: Patricia Waddy, 315/443-5099  
2nd V.P.: Richard Longstreth, 202/994-6098  
Secretary: Elaine Harrington, 312/528-4595  
Treasurer: Carter Page, 312/855-5403

Executive Director: Susan Kromholz, 215/735-0224

Copyright © 1994, The Society of Architectural Historians; all rights reserved.